



JAPAN PAVILION



MAFF

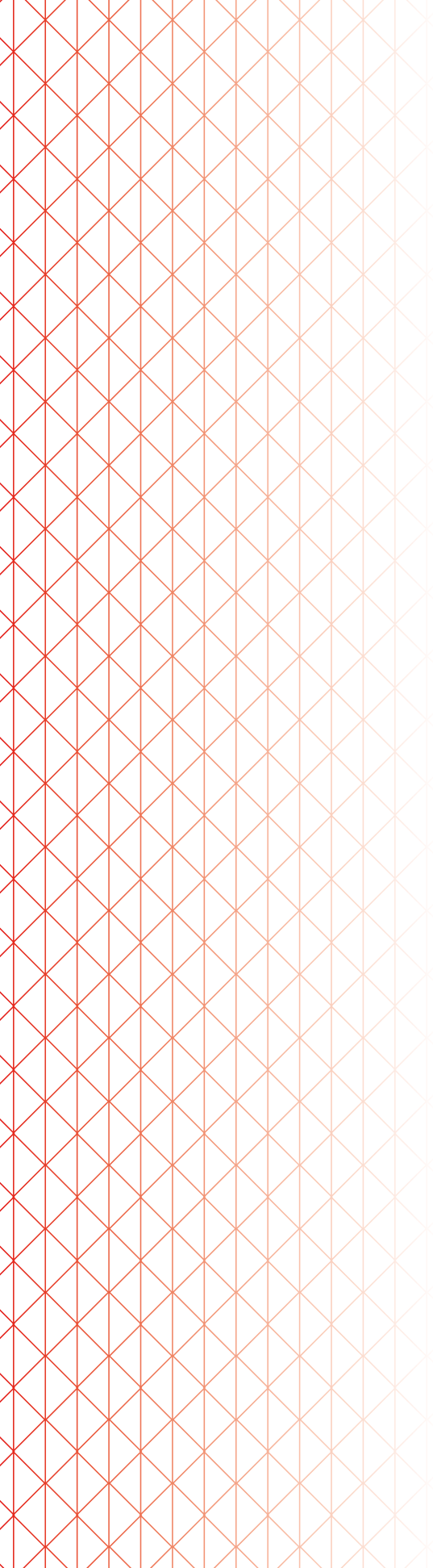
Ministry of Agriculture, Forestry and Fisheries

JETRO

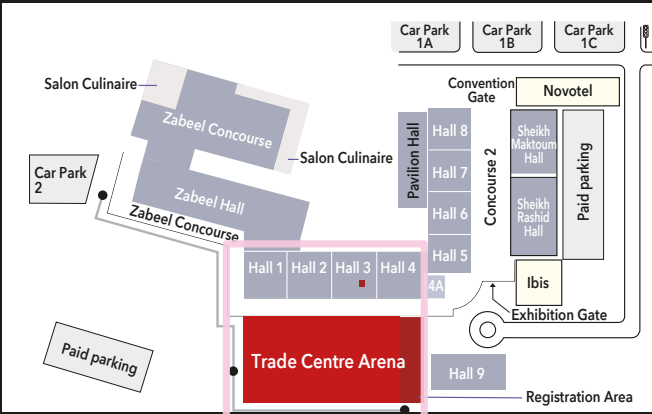
Japan External Trade Organization

Gulfood 2018

18 (Sun) - 22 (Thu) February 2018
DUBAI WORLD TRADE CENTRE, Dubai, UAE



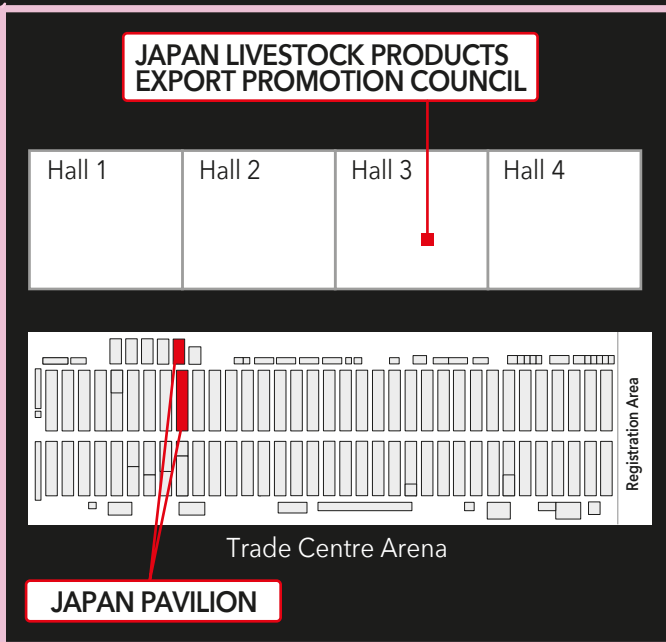
Dubai World Trade Centre



JAPAN PAVILION

Office	S-178
S-175	S-176
S-173	S-174
S-171	S-172

S-J4	S-K3
	S-K3
S-J8	S-K7
S-J10	S-K9
S-J16	S-K15
S-J20	S-K19
S-J22	S-K21
S-J22	
S-J24	S-K23
S-J28	S-K27
S-J30	S-K29



Trade Centre Arena

Processed Food

- S-K29** RAKURAKUSHOKUHIN INC. p.02
S-J30 SHINTECH CO., LTD. p.02
S-K23 ABUKUMA FOODS CO., LTD. p.03
S-K27 TOKYO NOODLE CO., LTD. p.03
S-J28 HOKURIKU CONFECTIONERY, LTD. p.04
S-K19 HYOGO PREFECTURE TENOBE SOMEN COOPERATIVE ASSOCIATION p.04
S-K21 AGRISTREAM KIMURA FARM CO., LTD. p.05

Rice/ Processed Rice

- S-J10** AIZU YOTSUBA AGRICULTURAL COOPERATIVE p.06
S-J8 TRADE LIFE CO., LTD. p.06
S-J4 ECO-RICE CO., LTD. p.07

Seasoning

- S-172** SHIBANUMA SOY SAUCE INTERNATIONAL CO., LTD. p.08
S-176 BANJO FOODS CO., LTD. p.08
S-K7 KINJIRUSHI WASABI CO., LTD. p.09
S-174 UNITED FOODS INTERNATIONAL CO., LTD. p.09
S-K9 KANEKU CO., LTD. p.10
S-K3 BANDO FOODS p.10
S-K3 NEOX CO., LTD. p.11
S-K15 SUMMIT TRADING CO., L.L.C. p.11
S-178 ROJ LTD. p.12

Beverages

- S-J24** ISOKOMANORI CO., LTD. p.12
S-J22 HOSHAKU BEVERAGE CO., LTD. p.13
S-J22 NIZONA CORPORATION p.13
Tea
S-173 YAWATAYACHAHO CO., LTD. p.14
S-175 RYUTSU SERVICE CO., LTD. p.14
S-171 ODANI KOKUFUN CO., LTD. p.15

Seafood / Processed Seafood Product

- S-J20** ABECHO SHOTEN CO., LTD. p.16
S-J16 SEINAN KAIHATSU CO., LTD. p.16

Prefectural Governments

- S-K19** HYOGO FOODS PROMOTION COUNCIL p.17
S-K3 TOKUSHIMA PREFECTURAL GOVERNMENT p.17

Hall 3

Beef

- C3-2** JAPAN LIVESTOCK PRODUCTS EXPORT PROMOTION COUNCIL p.18

Categories



Processed Food



Rice/ Processed Rice



Seasoning



Beverages



Tea



Seafood /
Processed Seafood Product



Beef

S-K29



RAKURAKUSHOKUHIN INC.

株式会社 樂樂食品

Established in 1977, we produce and sell household dishes, Chinese snacks and Chinese noodles to first class hotels and restaurants. We are gaining recognition for both quality and our philosophy of not using additives or preservatives.



Potato Soup

This product is only seasoned with salt and contains no chemical seasoning and preservatives. A flexible product that can be used in high end restaurants and hotels by adjusting the concentration levels.

Corn Paste

This product is only seasoned with salt and contains no chemical seasoning and preservatives. A flexible product that can be used in high end restaurants and hotels by adjusting the concentration levels.

Address MYOJIN-CHO 1-8-1, HACHIOJI-SHI,
TOKYO, 192-0046 JAPAN
Tel +81-42-643-1271
Fax +81-42-643-1271

URL www.rakurakushokuhin.jp/
Email rakuraku1977@arion.ocn.ne.jp
Contact Isao Sagara (Mr)
Position President



S-J30



SHINTECH CO., LTD.

STC SHINTECH

Japan: Sale and wholesale of cosmetics, health foods, exercise machines and daily goods. Wholesale to online stores and trading companies in Japan.

Overseas: Shopping malls in China, U.S., Canada and Europe



STC FRU VEGE SMOOTHIE DIET <GREEN>

A sumptuous smoothie which contains dietary fibres as the main component, combined with powdered tofu refuse, 218 different kinds of fermented plant extract and chia seeds to give you a sense of fullness. It can be enjoyed by mixing it with water or milk.

STC FRU VEGE SMOOTHIE DIET <RED>

A sumptuous smoothie which contains soluble dietary fibres as the main component, combined with powdered tofu refuse, 218 different kinds of fermented plant extract, vitamins and minerals. It can be enjoyed by mixing it with water or milk.

Address NAKASHINDEN 2-24-11, EBINA-SHI,
KANAGAWA, 243-042 JAPAN
Tel +81-46-205-1518
Fax +81-46-205-0820

URL <http://shintechs.co.jp/>
Email support@shintechs.co.jp
Contact Riku Honda (Mr)
Position President



Countries to which we already export China and Singapore

Looking for an agency

S-K23



ABUKUMA FOODS CO., LTD.



Established in 1972. We mainly concentrate on the production and sales of pickles and every-day household dishes. This time, we would like to introduce a "baby peach kanro-ni (stewed in soy-sauce and sugar)" which can be eaten whole. Including the seed.



Baby Peach Comport

A rare peach kanro-ni (peach stewed in soy-sauce and sugar) made by boiling Japan grown baby peaches. Each peach (including the seed) is boiled in a special syrup so it can be eaten whole. A perfect ingredient for confectionery bread, drinks or dessert.

Baby Peach Pickles

Using young peaches grown in Japan, we've created a sour, yet slightly sweet pickle. By using our own independent production method (manufacturing patent obtained), the entire peach is edible. Including the seed. It can be frozen and defrosted without altering its quality, and it maintains its colour even when applied with 230°C heat.

Address 4-14 HOBARA-MACHI, DATE-SHI,
FUKUSHIMA, 960-0627 JAPAN
Tel +81-24-575-1171
Fax +81-24-575-1147

URL www.abukumafoods.co.jp
Email h-suzuki@abukumafoods.co.jp
Contact Hidetaka Suzuki (Mr)
Position Executive President



Agency Address GOLDEN GRAINS Foodstuff Trading LLC
P.O.BOX 34715, DUBAI, U.A.E
Tel +971-4-334-4285

Email vijay@goldengrainsdubai.com
Contact VIJAY KIKLA (Mr)
Position Marketing Manager

Countries to which we already export Spain, UK, USA, Australia, Hong Kong, etc.

S-K27



TOKYO NOODLE CO., LTD.



Focusing mainly on our mini-sized flavoured instant noodles, we specialize in the development and sales of "mini-sized" products.



TOKYO NOODLE Chicken Flavour

This instant noodle doesn't use any animal raw materials and its size is perfect for a light snack or an alternative for a lunch time soup. As the product is individually packed, you can have as much as you want, whenever you want.

Shinchan Tonkotsu Ramen 5Packs

Each pack contains 5 servings and can be enjoyed at anytime of the day. The pork broth flavoured ramen is made without using any meat extracts.

Address 1079-1, FUKUI-CHO, ASHIKAGA-SHI, TOCHIGI
326-0338 JAPAN
Tel +81-284-70-1270
Fax +81-284-70-1277

URL www.tokyo-ramen.com
Email info@tokyo-ramen.com
Contact Kazuaki Imaizumi (Mr)
Position CEO



Acquired Licenses ISO22000 **Countries to which we already export** Russia, USA, China, Hong Kong, Korea, etc. **Looking for an agency**

S-J28



HOKURIKU CONFECTIONERY, LTD.

We, Hokuriku Confectionery, are a manufacturer located in Kanazawa-city, Japan. Established in 1918, Hokuriku Confectionery has been manufacturing biscuits, rice crackers and hardtacks for over a century. Our confectionery products are abundant in Japanese taste.



110g Canned Iron Rations with *KONPEITO KANPAN* (Hardtack)

We insist on using the original method, taking a long time in the fermenting and baking process. The simple and traditional taste of our hardtacks are always reliable in any situation. Also, Konpeito, a star sugar candy, helps stimulate saliva production, and dry hardtacks can be eaten easily.

Ten Millennia *MOCHI* (Rice Cake)

- Instant rice cake with roasted soy powder
- Easy to cook by only soaking the rice cake in water
- Shelf life is 5years

Address 2-290-1, OSHINO, KANAZAWA-SHI, ISHIKAWA, 921-8056 JAPAN

Tel +81-76-287-3939

Fax +81-76-244-6686

URL www.hokka.jp/en/

Email fan@hokka.jp

Contact Benjamin, Chih-Feng, Fan

Position Overseas Sales Division



Acquired Licenses HACCP(US), ISO9001 **Countries to which we already export** China, Korea, Singapore, Taiwan, Thailand etc. **Looking for an agency**

S-K19



HYOGO PREFECTURE TENOBE SOMEN COOPERATIVE ASSOCIATION

兵庫県手延素麺協同組合

Our association was founded in 1887 and the history of Somen noodles have been around for over 600 years. "IBONOITO" is the most famous Somen and has the top market share in Japan, due to its high quality and traditional technique.



Japanese handmade & hand-stretched the thinnest noodle "IBONOITO" Top grade

This is Ibonoito's most supported and distinctive product. It contributes 85% of our overall production, and by taking both time and care in our traditional methods, we are able to produce firm noodles that doesn't go soggy when boiled. With a boiling time of only 1.5 minutes, its both delicious and easy to make.

Japanese handmade & hand-stretched noodle "IBONOITO" Thicker version

This is a fragrant product using 100% Japan grown wheat. This Somen is made slightly thicker, for a soft texture. Can be enjoyed both cold or hot.

Address 219-2, TOMINAGA, TATSUNO-CHO, TATSUNO-SHI HYOGO, 679-4167 JAPAN

Tel +81-791-62-0826

Fax +81-791-62-3838

URL www.ibonoito.or.jp/english/

Email masaki-uchiyama@ibonoito.or.jp

Contact Masaki Uchiyama (Mr)

Position Associate Director



Acquired Licenses FSSC22000 **Countries to which we already export** USA, China, Thailand etc. **Looking for an agency**

S-K21



AGRISTREAM KIMURA FARM CO., LTD.

時の雫
KIMURA FARM

Established in 2008, we have been cultivating Japan's top quality "Tokino Shizuku" mangos. We manufacture jam from "Tokino Shizuku" mangos as well as "Mango Honey", made by blending Japanese honey with mango puree.



Mango Confiture

Mango confiture was awarded the highest award in iTQi: International taste assessment organization of Kingdom of Belgium.
The products contain no allergic ingredients.

Mango Honey

We only blend "Tokino Shizuku" mango puree, and pure Japanese, low calory honey. You can enjoy the rich aroma and taste of both the mango and honey.

Address 13509-32 KAWAMINAMI, KAWAMINAMI-CHO,
KOYU-GUN, MIYAZAKI, 889-1301 JAPAN
Tel +81-90-8943-6804
Fax +81-983-27-1211

URL www.kimurafarm-miyazaki.com/
Email agristream.kimura@rondo.ocn.ne.jp
Contact Koji Kimura (Mr)
Position CEO



Countries to which we already export China and Singapore

Blank area for additional information or contact details.

S-J10



AIZU YOTSUBA AGRICULTURAL COOPERATIVE



With a huge appreciation for the local blessings and the people, the company aims to create a valued JA (Japan Agricultural Cooperatives) by creating a community connected by trust through agriculture and produce.



Inawashiro Ten-no-tsubu (The Ultimate Sushi Rice)

Sweet and delectable rice is grown in Inawashiro region. The rice is grown only by certified producers who practice reduced fertilizer and pesticide. Rice grain is large and dense and makes great Sushi rice.

Address 35-1 OUGI-MACHI AIZUWAKAMATSU-SHI,
FUKUSHIMA, 965-0025 JAPAN

Tel +81-242-62-4211

Fax +81-242-62-4214

Agency Summit Trading Co. L.L.C.

Address P.O.Box 2390, Abu Dhabi, U.A.E

Tel +971-2-674-3100 (Abu Dhabi)

+971-4-885-3323 (Dubai)

URL aizuyotuba.jp/

Email igarashi-ke001@aizuyotuba.jp

Contact Ken-ichi Igarashi (Mr)

Position Senior staff

Email info@summit.ae

Contact Shiro Ohkubo (Mr)

Position Director & General Manager



Countries to which we already export Qatar and UAE

S-J8



TRADE LIFE CO., LTD.



Our main focus is to export SAFE and RELIABLE foods through ingredients inspection, carried out by Mbic Life Co. Ltd. Which is a subsidiary company of LIFE GROUP.



RICE BRAN OIL

This oil is made from rice bran and germs, and is plentiful in beneficial components, such as vitamin E, oleic acid, linoleic acid, plant sterol, γ -oryzanol, tocotrienol, etc.

LIFE DRINK

Infiltrates into your body.
A fresh taste and flavour which incorporates the acidity of the natural fruits (citrus and malic acids).

Address TENNOZ CENTRAL TOWER, 18F 2-24,
HIGASHISHINAGAWA 2-CHOME, SHINAGAWA-KU
TOKYO, 140-0002 JAPAN

Tel +81-3-5769-7231

Fax +81-3-5769-7248

URL

Email trade_info@life-silver.com

Contact Yuzuru Zobe (Mr)

Position Deputy Section Director

Countries to which we already export China and Singapore

S-J4



ECO-RICE CO., LTD.



This company was founded by a group of environmental conservation type agricultural rice farmers from Niigata prefecture. We produce, sell and deliver safe, secure rice and processed rice products from the farm to the dinner table.



Legendary Rice SHIRAFUJI

We spent 10 years recovering the legendary rice "Shirafuji". Rice that went extinct after being cultivated in Niigata prefecture between the end of the Edo-era and the beginning of the Showa-era. We are the only company in the world that cultivates this precious type of rice. It's extremely tasty when used for sushi rice or fried rice. As it is of local variety, compared to the recently developed variety it is also genetically precious.

Emergency Rations Alpha Rice 'HANBUNMAI'

Using a unique manufacturing method, we were able to produce this low protein "Hanbun-mai" rice with reduced cilium and phosphorous content without the use of chemicals or additives. It can be eaten as an emergency ration by healthy people and people with medical conditions. E.g. dialysis patients and people with kidney disease. Ready to eat by just pouring water or hot water, and has an expiration time of 5 years. Can also be used for Arabian style chicken rice.

Address 970 - 100 WAKIKAWASHINNDEN-MACHI,
NAGAOKA-SHI, NIIGATA, 954-0181 JAPAN
Tel +81-258-66-0070
Fax +81-258-66-0447

URL rice-cookie.com/
Email office@eco-rice.jp
Contact Yu Toyonaga (Mr)
Position Director



Countries to which we already export USA and Taiwan

Large empty rectangular area with horizontal lines, intended for additional information or contact details.

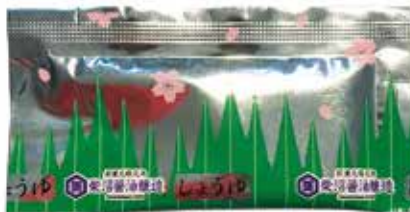
S-172



SHIBANUMA SOY SAUCE INTERNATIONAL CO., LTD.



Shibanuma Soysauce was established in 1688 during the Edo period in Tsuchiura, Ibaraki. We have been using traditional wooden barrels to make soy sauce since our establishment. In the recent years we have started to export products to global markets.



Low Alcohol Soy Sauce 18L

This soy sauce is a low alcohol product. Currently with a 0.03% alcohol percentage (Dubai field measurement). Our soy sauce is produced using a 328 year old preparation method using wooden barrels. This creates a very unique fragrance and taste.

Soy Sauce Small Sachet 5ml

This is a concentrated non-alcoholic soy sauce packaged in small sachets. We are able to manufacture these small soy sauce sachets with original designs, in small lots.

Address #M-203,783-12, ENOKIDO, TSUKUBA-SHI, IBARAKI, 305-0853 JAPAN

Tel +81-29-839-9736

Fax +81-29-839-5252

URL www.shibanuma.com/en

Email h-shibanuma@shibanuma-inter.com

Contact Hideatsu Shibanuma (Mr)

Position President



Countries to which we already export France, Germany, Switzerland, USA, Australia, etc.

S-176



BANJO FOODS CO., LTD.

もっとおいしく、もっとたのしく



Banjo Foods has over 6 decades of history as a Wasabi and condiment company in Japan. We specialize in authentic Wasabi products and are proud that our condiments compliment well with not only Japanese cuisine but also with gourmet dishes around the world.



Chopped Wasabi Stalk 100g

Using 100% Hon (Japanese) Wasabi produced in Shizuoka Pref. in Japan. You can enjoy both the fresh Wasabi texture and flavour which pairs well with not just Sashimi and Sushi but also beef steak.

Coloring-Free Wasabi 100g

This is a flavourful product which blends Hon-Wasabi produced in Shizuoka, with the pungent taste of horseradish. No artificial colouring is used and is contained in highly functional packaging making it easy to use without creating a mess.

Address HIGASHINIHONBASHI GREEN BLD., 10F 2-8-3 HIGASHINIHONBASHI, CHUO-KU TOKYO, 103-0004 JAPAN

Tel +81-3-5839-2990

Fax +81-3-5839-2993

URL banjo.co.jp/

Email global@banjo.co.jp

Contact Takashi Yokotani (Mr)

Position Overseas Sales Manager



Acquired Licenses ISO22000 **Countries to which we already export** USA, Hong Kong, Malaysia, Singapore, Taiwan, etc. **Looking for an agency**

S-K7



KINJIRUSHI WASABI CO., LTD.



金印
KINJIRUSHI
BRAND

Since the establishment of our company in 1929, we have continued to be the pioneers in Wasabi products. By making sure that quality comes first, we are able to deliver fresh and aromatic Wasabi to our customers.



FS-208 Hon Wasabi

This product only uses the highest grade of Wasabi, with no artificial colouring. In order to deliver the fragrance and pungency of our freshly grated wasabi, this product is grated at -196°C , using Kinjirushi's "ultra-cold temperature grating method", before being freeze packed.

YKD-250 Kizami Wasabi (Chopped Wasabi)

The stem of fresh Wasabi is chopped and blended with soy sauce to provide a unique texture. Our Kizami Wasabi can not only be paired with seafood, but also with fatty meats and sauces. The diverse ways in which our product can be used, is precisely why it is popular amongst customers all over the world.

Address 3-19-9 HACCHOBORI, CHUO-KU, TOKYO
104-0032 JAPAN

Tel +81-3-3523-4703

Fax +81-3-3523-4706

URL www.kinjirushi.co.jp/english

Email kenshi-setoguchi@kinjirushi.co.jp

Contact Kenshi Setoguchi (Mr)

Position Chief



Acquired Licenses ISO22000 **Countries to which we already export** UAE, Germany, UK, USA, Hong Kong, etc. **Looking for an agency**

S-174



UNITED FOODS INTERNATIONAL CO., LTD.

Established in 1976, UNITED FOODS INTERNATIONAL is one of the largest O.E.M. company in Japan. Dealing with products such as soup base extracts, dressing, confectionery etc.



Japanese Barbecue Sauce

This Japanese style BBQ sauce uses soy sauce, garlic, fruits and various spices as a base. With its rich flavor, it brings out the Umami of the beef.



Dressing

This is a Japanese style soy sauce based dressing, with a fragrant sesame flavour. It brings out the natural taste of the vegetables and is perfect for lettuce, tomatoes, onions as well as a variety of salads or Japanese dishes such as Ohitashi (boiled greens in bonito-flavoured soy sauce) and foods mixed with sauces.

Address CHIYODA BLDG. , 1-5-18, SARUGAKUCHO,
CHIYODA-KU, TOKYO, 101-0064 JAPAN

Tel +81-3-3295 7550

Fax +81-3-3293 8049

URL www.ufi.co.jp

Email akihiro.yajima@ufi.co.jp

Contact Akihiro Yajima (Mr)

Position General Manager



Acquired Licenses HALAL, HACCP, ISO 09001, ISO 22000 **Countries to which we already export** USA, Hong Kong, Malaysia, Singapore, Taiwan, etc.

S-K9



KANEKU CO., LTD.

まごころ、きかせる

Founded in 1927, Kaneku Co., Ltd has been developing and producing Wasabi products for over 90 years. Our wasabi products, both powder and paste types are mostly purchased by professional chefs worldwide. Besides Wasabi products, we have also developed other products such as Yuzu pepper and Ginger paste, which are also purchased in over 30 countries.



505 FRESH WASABI 750g

A wasabi paste which is made especially for exporting overseas. Its packaged generously with a size of 750g, and can be used for sashimi and other professional uses.



Yuzu Peel Cut 100g

Sliced and frozen yuzu peel from only domestically grown yuzu. It is free from food colorings and additives.

Address 3-866 HINATAWAWDA, OME-SHI
TOKYO, 198-0046 JAPAN

Tel +81-428-22-2141

Fax +81-428-24-4166

URL www.kaneku-wasabi.co.jp/

Email 0812kato@kaneku-wasabi.co.jp

Contact Toshiji Kato (Mr)

Position International Sales Manager



Acquired Licenses FSSC22000

Countries to which we already export Dubai, Germany, USA, Australia, Korea, etc.

S-K3



BANDO FOODS



Over 95% of the organic juices used in Organic JAS certified products, are made in our own agricultural farms. The majority of the fruits for our non-organic product range, come from reliable farmers who are recognised within our prefecture and offer safe, good quality resources. Our other product range comprises mainly of certified organic goods as well as HALAL certified products. We maintain high product standards to ensure that we can cater fresh food to everyone around the globe.



Organic drink Su-Su-Su

Our drink contains the juices of 3 different kinds of organically grown Japanese citrus fruits. Yuzu, Sudachi and Yukō. All carefully handpicked. By using organic sugar, we were able to produce a rich taste.

Sudachi Marushibori Juice

Both the acidic taste, and the fragrance of the Sudachi fruit is considered to be the best out of all the flavourful citrus fruits. Containing all the main nutrients. It can be used as a salad dressing, or as an alternative seasoning to lemon or lime. It can also be blended with carbonated water or as a concentrated base for a drink by mixing it with honey.

Address 63 AZA-UENO, OAZA-IKUMI, KAMIKATSU-CHO,
KATSUURA-GUN, TOKUSHIMA, 771-4503 JAPAN

Tel +81-885-46-0822

Fax +81-885-46-0823

URL bando-farm.com

Email bando@quolia.ne.jp

Contact Takahide Bando (Mr)

Position Representative



Acquired Licenses HALAL, Organic (JAS)

Countries to which we already export France, Germany, Spain, Australia, China, etc.

Looking for an agency

S-K3



NEOX CO., LTD.



A trading company that was established in 2014. Our services include, Halal certification consulting, sales and sales support of Halal certified products, consulting for packaging material, and bags for duty free shops.



Yuzurikko (Yuzu miso)

Each pesticide free yuzu fruit is first inspected and any stains on the skin are carefully shaved off. A paste is made using the skin, tufts/flesh and juices before thoroughly mixing in beet sugar from Hokkaido and Japanese Miso from Awa region. A product which is 100% Japanese and additive free.

Kito Yuzu Tea

Due to the aging population in mountainous areas of Tokushima prefecture, there are large amounts of yuzu that have been left unharvested. We help with the harvesting of these yuzus, and use them in our products. Not only can it be enjoyed as tea, but can also be used as a sauce for meat dishes, marinade, or vinegared dishes by adding a bit of salt

Address 5TH AZUMA BLDG., 8F 3-38, KANDA-SAKUMACHO, CHIYODA-KU, TOKYO, 101-0025 JAPAN

Tel +81-3-5825-9364

Fax +81-3-5825-9365

URL www.neo-x.co.jp

Email info@neo-x.co.jp

Contact Takayuki Maeda (Mr)

Position



Acquired Licenses HALAL

Countries to which we already export Singapore

Looking for an agency

S-K15



SUMMIT TRADING CO., L.L.C.



Established in 1977 in Abu Dhabi, U.A.E. Summit Trading Co., L.L.C. is Gulf's largest dealer of Japanese Foods. We meet all our customers needs when it comes to authentic Japanese Dry & Frozen food products, Japanese Wagyu Beef, Fresh Vegetables, Fresh Seafood and Seasonal Fruits



Nagatanien Yu-ge (For Export) Shiro-miso

An instant powder type miso soup which uses vacuum freeze dried miso. We added wakame seaweed, wheat gluten cake and spring onions to a round tasting white miso. As it is in powdered form, it can easily be emptied out into a bowl, and as the hot water is poured, the miso melts and gives off a rich aroma of miso.

Crab Stick Kaoribako

Winner of the 45th agricultural festival Emperors cup top prize. A crab flavored Kamaboko (boiled fish paste) which is of close resemblance to a crab. A product that replicates the shape, texture, taste, color and juicyness of the leg meat of a snow crab.

Address P.O. BOX 2390, ABU DHABI, UNITED ARAB EMIRATES

Tel +971-2-674-3100

Fax +971-2-674-3992

URL www.summit.ae/

Email info@summit.ae

Contact Takashi Suzuki (Mr)

Position Deputy General Manager



Acquired Licenses ISO 9001:2015, HACCP & OHSAS 18001:2007

Countries to which we already export Bahrain, Iran, Oman, Saudi Arabia, India and Maldives

S-178



ROJ LTD.

ROJ LTD

ROJ LTD is the leading consolidator, supplier and distributor of Japanese products. We are partners with international Japanese F&B specialists, which allow our clients to access first class products. Our main value is to satisfy our customers' needs by providing high quality services and premium Japanese products.



Sushi Nori Matsu

Sushi Nori Matsu is made using seaweed harvested from the sea of Ariake, is located in the southern parts of Japan which is an ideal place to grow high quality seaweed. Ariake grown seaweed is slightly green, soft, and gives off a very pleasant scent. Our Sushi Nori Matsu is well known to be the favorite Nori famous chefs all around the world.

Premium Quality Soy Sauce

The sweet aroma of this soy sauce is perfectly balanced with sweetness, UMAMI and richness. It's not specific to any dish or cooking method, and can be used with pretty much everything. This soy sauce meets the alcohol regulations in Saudi Arabia, UAE and all Middle East countries, making it a safe product for all customers.

Agency ROJ LTD.
Address Nakheel Area, P.O.Box31291, RAK, UAE
Tel +971-50-297-4059

URL <http://roj-fz.com>
Email export@roj-fz.com
Contact Elie Ghosn (Mr)
Position Managing Director



Countries to which we already export Bahrain, Jordan, Kuwait, Saudi Arabia, UAE and etc.

S-J24



ISOKOMANORI CO., LTD.

ISOKOMA
-JAPAN-

Established in 1984, Isokoma Nori Co., Ltd. has focused on the production and sales of Yaki-Nori, Furikake (condiment flakes for rice), Latte (powdered drinks).



Assorted Latte (Matcha, Purple Sweet Potato, Strawberry)

This is a powdered drink which can be made easily by just pouring hot water, and can be served both hot or cold. We offer 3 different kinds of tea. Matcha, Strawberry latte (2017 excellent sense of taste award winner) and Purple Sweet Potato (2016 SIAL innovation award winner).

Japanese Nori Seaweed (Laver)

We carefully select the highest quality (based on colour and fragrance, and how it melts in your mouth) of Japanese grown Nori (mainly in Kyushu prefecture, Ariake sea) before roasting and packaging them. The packaging is entirely made of aluminium, and allows the flavour to be preserved for a long period of time (1.5 to 2 years)

Address 6-6-33 MARIKO, SURUGA-KU, SHIZUOKA-SHI, SHIZUOKA, 421-0103 JAPAN
Tel +81-54-259-8018
Fax +81-54-259-8063

URL www.isokoma.co.jp/1/HP/EN/index.html
Email kosuke@isokoma.co.jp
Contact Kosuke Fukada (Mr)
Position President-Director



Agency JTC DWC LLC
Address #302-306 3rd Floor, Building C(A3), Office Park, Dubai Aviation City, Dubai South (DWC), Dubai, UAE P.O.Box 644273
Tel +971-4-887-9946

Email erina_tsuruhara@global-p.com
Contact Erina Tsuruhara (Ms)
Position Sales Manager

Acquired Licenses HALAL **Countries to which we already export** Dubai, Singapore, Taiwan, Vietnam, etc.

Looking for an agency

S-J22



HOSHAKU BEVERAGE CO., LTD.



Hoshaku Beverage is located in the Shiwa area of Higashihiroshima City where we are blessed with the purest water. Due to the fortunate location, we are able to manufacture and distribute safe, high quality soft drinks for the enjoyment of the world.



RED POWER

This Japanese energy drink uses high quality ground water. The fresh balance of acidity and sweetness quenches your thirst and supports you in times when you want to raise your spirits.

SUPER STAMILON C

The fresh sensation and the juicy tropical flavor will help you rejuvenate your spirits. A high capacity vitamin health drink which contains royal jelly, honey, vitamins and an assortment of necessary amino acids (BCAA).

Address 2061-3, SHIWA-CHO BEFU, HIGASHIHIROSHIMA-SHI, HIROSHIMA, 736-0267 JAPAN

Tel +81-82-433-4959

Fax +81-82-433-5745

URL www.hoshaku.co.jp/english/

Email overseas@hoshaku.co.jp

Contact Naomi Tokishige (Ms)

Position Assistant Manager



Acquired Licenses ISO9001,IS14001,ISO22000,FSSC22000 **Countries to which we already export** Middle East, USA, Hong Kong and Taiwan

S-J22



NIZONA CORPORATION



NIZONA specializes in manufacturing and exporting private brand food supplements and beverage products made in Japan. We cover the whole business cycle from development, manufacturing, registration, regulations and international logistics and have a successful track record of exports throughout the world.



Nizen Probiotic Green Smoothie

This dietary slimming green smoothie is made using pesticide free green barley grass, combined with plant fermented extract from 82 different kinds of fruits and vegetables that have been matured for over 3 years. 1 meal of 6grams only contains 22.8kcal.

Collagen Drink (50ml)

This high quality Japanese Collagen Drink is manufactured at a reliable, GMP certified factory in Japan. The taste can also be adjusted according to the customers demand.

Address SANNOMIYA VENTURE BUILDING, 622 4-1-23, HAMABEDORI, CHUO-KU, KOBE-SHI, 651-0083 JAPAN

Tel +81-78-200-6147

Fax +81-78-330-3397

URL www.nizona.co

Email nd@nizona.co

Contact Naruya Dama (Mr)

Position Director



Countries to which we already export UAE, USA, Australia, Philippines, Singapore, etc.

Looking for an agency

S-173



YAWATAYACHAHO CO., LTD.

株式会社 八幡屋茶舗

We have been committed to manufacturing green tea for over 100 years. Our policy is "proposing the possibilities of tea". We not only deal with the actual tea leaves but also with processed tea, that can be combined with other products.



Powder Tea (Green Tea, Roasted Green Tea, Green Tea With Roasted Rice, Matcha) And Green Tea Related Items

We deal with powdered tea made from grinding tea leaves. It can be used for processed beverages or as a key ingredient in confectioneries or other food products. The rich aroma of Japanese tea can be enjoyed especially when paired with confectioneries.

WA-IN brand Organic Green Tea Series

This is an organic brand. We stock a wide range of teas from green tea, Hoji-cha (roasted green tea), Matcha green tea, Genmai tea (brown rice tea). This product range allows you to experience and enjoy the true natural flavours of tea.

Address 581-1, AMENOMIYA, MORIMACHI, SHUCHI-GUN, SHIZUOKA, 437-0216 JAPAN

Tel +81-538-67-8655

Fax +81-538-85-3333

Agency Address Agrak Food & Beverages Trading LLC
P.O. Box624558 No.6615 Tamani Art Bldg.
Business Bay, Dubai

Tel +971-55-310-6183

Acquired Licenses JAS **Countries to which we already export** UAE, UK, Malaysia and Singapore

URL www.yawatayachaho.com/en/
Email r.sakaue@yawatayachaho.co.jp
Contact Ryo Sakaue (Mr)
Position



Email ota@senjujup.com
Contact Hiroshi Ohta (Mr)
Position Director

S-175



RYUTSU SERVICE CO., LTD.

株式会社 流通サービス

The tea leaves are grown organically in our own agricultural farms before being processed and delivered as a final product. We foresee everything from the cultivation, manufacturing and the sales of our product. We offer real green tea and matcha at a reasonable price. We also offer tours of our tea farms and factories.



Fuji Matcha

Fuji-Matcha is made of pesticide-free tea leaves we cultivate. The tea leaves as raw materials for Fuji-Matcha are carefully and gradually ground by the stone-mill to prevent friction heat.

Premium GYOKURO Powder

Gyokuro production in Japan is only 0.8%. Among them, our Gyokuro is pesticide-free and by using a specialised harvesting method of shading the Gyokuro for over 20 days, we are able to bring out the Umami, sweetness and flavor of the tea.

Address 340 KURASAWA, KIKUGAWA-SHI, SHIZUOKA, 439-0002 JAPAN

Tel +81-537-35-5661

Fax +81-537-35-6680

Countries to which we already export Germany, Slovakia, UK, Australia, Singapore, etc.

URL www.fuji-matcha.com
Email contact@fuji-matcha.com
Contact Yoshiaki Hattori (Mr)
Position CEO



Looking for an agency

S-171



ODANI KOKUFUN CO., LTD.



Through our experience in dealing with a wide range of rice and grain related products since the company's establishment, we have worked hard to improve our skill and become the first in the barley tea industry to accomplish the mass production of hygienic powdered barley tea. At present, we don't just deal with brown rice and barley tea, but we also specialize in a wide range of rice and grain products such as green tea, oolong tea, assortments of grains and specialized health teas and foods as our main product range. Odani Kokufun would like to continue to strive as a company which is relied upon by all our customers.



OSK New Family Japanese Green Tea 2g x 20 bags

This is a pack of green tea bags made of 100% green tea grown in Japan. Our original formula gives a taste and flavour that other companies cannot emulate.

OSK New Family Japanese Tea Mixed With Roasted Rice 2g x 20 bags

OSK New family genmai tea is blended with domestically grown green tea and roasted rice. Each bag packed with 2g of brown rice tea. We use nitrogen inflation to preserve the flavour and the bags aren't stapled so they can be disposed easily after use.

Address 14-8 TAKASU, 1-CHOME KOCHI-SHI, KOCHI, 781-8104 JAPAN
Tel +81-88-882-2645
Fax +81-88-882-2655

URL www.osk-odani.co.jp/
Email ok-contact@osk-odani.co.jp
Contact Kenichi Watanabe (Mr)
Position Manager



Acquired Licenses HALAL **Countries to which we already export** Indonesia, Malaysia, Singapore, Thailand and Vietnam **Looking for an agency**

Large empty rectangular area with horizontal lines, likely a placeholder for contact information or a form.

S-J20



ABECHO SHOTEN CO., LTD.

ABECHO

Since its establishment in 1961, whilst enjoying the benefits of the Sanriku ocean, Abecho Group has made efforts in deploying various businesses based on its "marine products" and "tourism" which are the key industries of Sanriku Japan.



SANRIKU FISH SAUSAGE

The Sanriku fish sausage is the only Halal certified brand from Japan. With 6 different original flavours, we are able to offer a product which is low in both calories and fat content and rich in omega 3.

Address 2-13, MINATO-MACHI, KESENUMA-SHI, MIYAGI, 988-0021 JAPAN

Tel +81-226-22-6666

Fax +81-226-29-6226

URL www.abecho.co.jp/en/

Email t_saito@abecho.co.jp

Contact Tsukasa Saito (Mr)

Position Management & Planning Dept. Manager



Acquired Licenses HALAL (going through procedures)

Looking for an agency

S-J16



SEINAN KAIHATSU CO., LTD.



Established in 1951, SEINAN KAIHATSU company is a pioneer of fish sausage. We also offer various frozen pie products.



Tuna Sausage with DHA-EPA 60g

- Low salt
- Contains DHA, EPA
- Contains iron
- No preservatives, coloring agents, or egg whites

Mikan Mandarin Orange Sausage, High in Vitamin C, 60g

- Mandarin oranges produced in Nishi-Uwa, Ehime prefecture
- low salt
- plenty of calcium
- plenty of Vitamin C
- no preservatives, dyes, coloring agents, or egg whites

Address 1-300-1, MIYAUCHI, HONAI-CHO, YAWATAHAMA-SHI, EHIME, 796-0293 JAPAN

Tel +81-894-36-0651

Fax +81-894-36-0030

URL www.seinankaihatsu.co.jp/en/index.html

Email eigyou@seinankaihatsu.co.jp

Contact Makoto Yamaji (Mr)

Position Senior Manager



Countries to which we already export Singapore

S-K19

HYOGO FOODS PROMOTION COUNCIL



Hyogo Foods Promotion Council is a council of producers, distributors, consumers, media, and local administration that comes together in order to expand the production, distribution and consumption of delicious food from both the land and sea from Hyogo (Japan).

Address 5-10-1 SHIMOYAMATE-DORI, CHUO-KU,
KOBE-SHI, HYOGO, 650-8567 JAPAN

Tel +81-78-362-3442

Fax +81-78-362-4276

URL www.hyogo-umashi.com/index.htm

Email Shimpei_Matsukawa@pref.hyogo.lg.jp

Contact Shimpei Matsukawa (Mr)

Position Secretariat Clerk



S-K3

TOKUSHIMA PREFECTURAL GOVERNMENT



In Tokushima Prefecture, we have been promoting efforts to obtain HALAL certifications since 2014. As of September 2017, we have managed to obtain HALAL certifications for 18 businesses and 87 products/ services. Out of the HALAL certified products, we would like to exhibit our processed goods, containing the top 3 flavourful citruses, "Yuzu", "Sudachi" and "Yuko". These are highly popular amongst Muslim customers.

Address 1-1, BANDAI-CHO, TOKUSHIMA-SHI,
TOKUSHIMA, 770-8570 JAPAN

Tel +81-88-621-2407

Fax +81-88-621-2856

URL www.pref.tokushima.lg.jp/en/japanese/

Email hamamoto_kyouhei_1@pref.tokushima.jp

Contact Kyohei Hamamoto (Mr)

Position Semi Senior Staff Member



Acquired Licenses HALAL



JAPAN LIVESTOCK PRODUCTS EXPORT PROMOTION COUNCIL

JAPAN'S GENUINE WAGYU BEEF - the Ultimate Delicacy -

It is only Japan's genuine Wagyu Beef that has the ultimate 'texture', 'flavour', and 'aroma'.

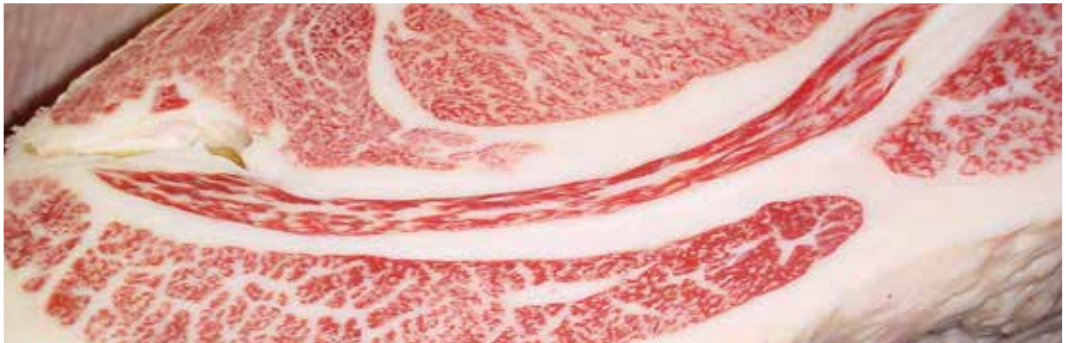
Unlike all other beef, (1) Japan's Wagyu is unique for (a) the finest texture, and (b) the highest grade marbling within the muscle fibre, whose melting point is as low as human body temperature, so that Wagyu immediately melts in the mouth, releasing the rich and sweet 'Wagyu aroma' that is suggestive of coconut and peach. (2) More than half of genuine Wagyu's finely distributed marbling is healthy unsaturated fatty acid, just as in olive.

Japan's Wagyu opens new dimension in all of your five senses.



Proof of Japan's Genuine Wagyu

To certify the unrivaled quality of Japan's Genuine Wagyu, WAGYU mark is attached. Only Genuine Wagyu bears this trade mark issued by Japan Beef Export Promotion Committee.



Address NO.2 DIC BLDG. 16-2, SOTOKANDA 2-CHOME, CHIYODA-KU, TOKYO, 101-0021 JAPAN
Tel +81-3-6206-0846
Fax +81-3-5289-0890

URL <http://jlec-pr.jp/>
Email beef@jlec-pr.jp



Members of JAPAN LIVESTOCK PRODUCTS EXPORT PROMOTION COUNCIL

NH FOODS LTD.

URL www.nipponham.co.jp/eng/
Tel +81-3-4555-8290
Contact Yoshinori Endo
Position Senior Manager of Overseas Business Division
Email y.endo@nipponham.co.jp



Local Contact **NH Foods U.K.Limited.**

Tel +44-20-7480-7146
Contact Yuriko Mackenzie
Email mackenzie@nipponham.co.uk

ITOHAM FOODS INC.

URL www.itoham.co.jp/english/
Tel +81-3-5723-6201
Contact Ken Hashimoto
Position Senior Assistant Chief
Email kashuku.ryou@itoham.co.jp



Local Contact **ANZCO FOODS EU LTD.**

Tel +44-1708-371803
Contact Yvan Elebaut
Email yvan.elebaut@anzcofoods.eu

ZEN-NOH International Corporation

URL www.zennoh-intl.com
Tel +81-3-6271-8424
Contact Takuya Morita at Livestock Dept.
Email morita-takuya@zennoh-intl.com



MEAT-COMPANION CO.,LTD.

URL www.meat-c.co.jp/
Tel +81-42-526-3451
Contact Ayano Kato at Overseas Dept.
Email a.kato@meat-c.co.jp



S FOODS INC.

URL www.sfoods.co.jp/english/
Tel +81-798-43-1075
Contact Ryohei Yamaji
Position General Manager of Overseas Division
Email ryamaji@sfoods.co.jp



STARZEN INTERNATIONAL CO.,LTD.

URL www.starzen.co.jp/
Tel +81-3-5783-2374
Contact Kazuhiro Soma
Position General Manager of Export Dept.
Email kazuhiro.soma@starzen-group.com



KIRISHIMA RANCH

URL <http://japanwagyu.jp/>
Tel +971-56-487-9904
Contact Yoshihito Otani
Email y.otani@globalinx.ae



NAITO LLC.

URL www.japanesefoodsupplies.com/
Tel +81-574-80-0018
Contact Keiko Naito
Position CEO
Email store_naito@bz01.plala.or.jp



GLOBAL AGENCY CO.,LTD

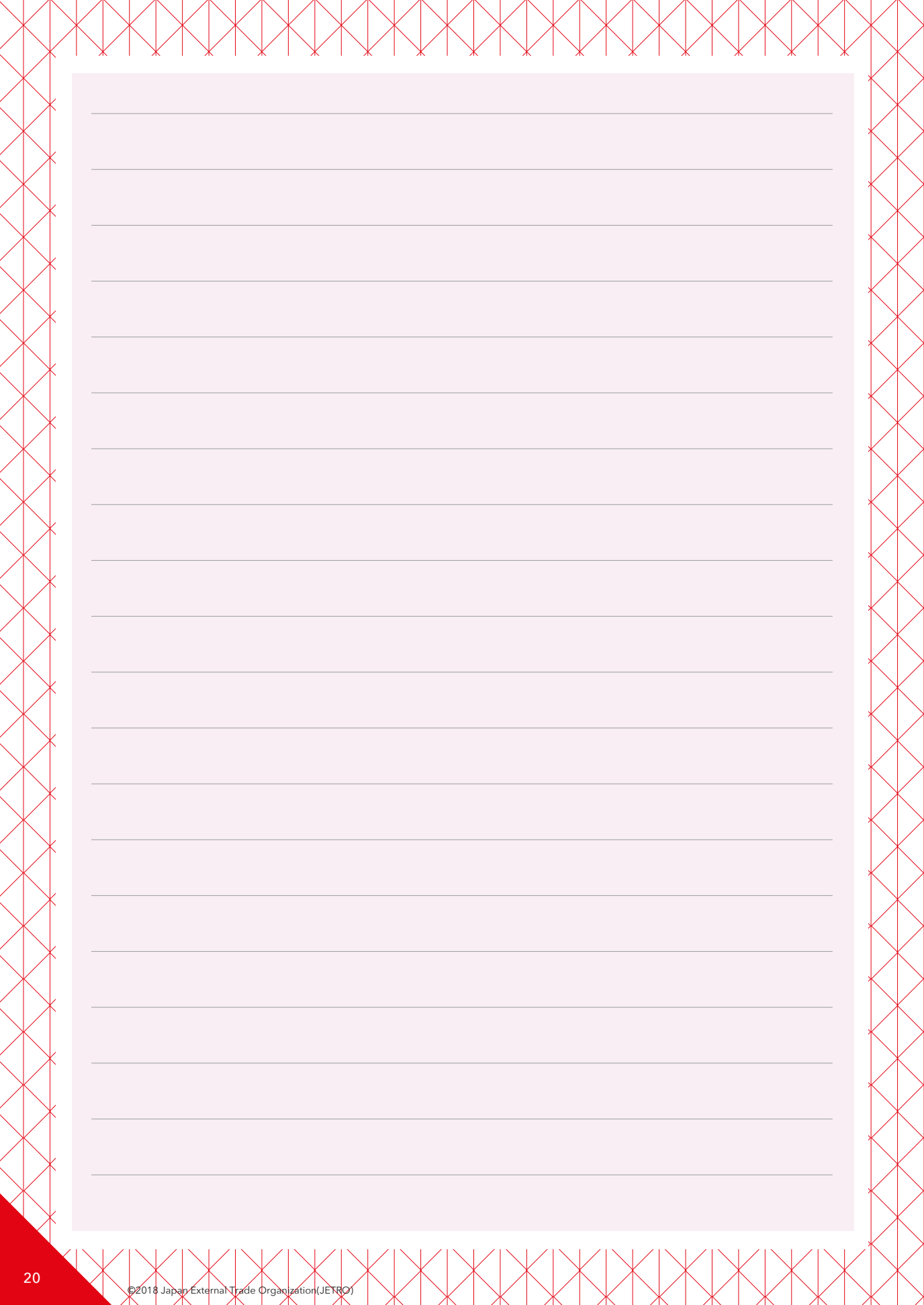
URL www.mef.ae/



Local Contact **Middle East Fuji L.L.C.**

Tel +971-52-926-0226
Contact Masanori Okada
Position Manager of International Trading Department
Email okadam@mef.ae





A large, light pink rectangular area containing 20 horizontal lines, intended for writing or drawing.

MAFF

Ministry of Agriculture, Forestry and Fisheries

Ministry of Agriculture, Forestry and Fisheries

Address 1-2-1, KASUMIGASEKI, CHIYODA-KU,
TOKYO 100-8950, JAPAN

Tel +81-3-6744-1502

URL <http://www.maff.go.jp/e/index.html>



JETRO

Japan External Trade Organization

JETRO HQ

Address ARK MORI BUILDING, 6F
12-32, AKASAKA 1-CHOME, MINATO-KU, TOKYO
107-6006 JAPAN

Tel +81-3-3582-5511

URL <https://www.jetro.go.jp/en/>



JETRO DUBAI

Address 35TH FLOOR, #3503 - #3506, THE ONE TOWER
BARSHA HEIGHTS, TECOM , DUBAI
P.O.BOX: 2272, DUBAI, U.A.E.

Tel +971-4-564-5878

Fax +971-4-564-5864

URL <https://www.jetro.go.jp/uae/>



JETRO, or the Japan External Trade Organization, is a government-related organization that works to promote mutual trade and investment between Japan and the rest of the world. Originally established in 1958 to promote Japanese exports abroad, JETRO's core focus in the 21st century has shifted toward promoting foreign direct investment into Japan and helping small to medium size Japanese firms maximize their global export potential.

All information in this publication is based on the exhibitors' declaration and verified to the best of JETRO's ability. However, JETRO does not accept responsibility for any loss or damage arising from any reliance on it.



Japan

JETRO
Japan External Trade Organization



JAPAN

