



JETRO BANGKOK

16th Floor, Nantawan Bldg.,
161 Rajadamri Rd., Bangkok 10330, THAILAND
TEL : 66-2-253-6441
FAX : 66-2-253-2020

JETRO TOKYO

ARK Mori Building 6F, 12-32 Akasaka 1-chome,
Minato-ku, Tokyo 107-6006, Japan
TEL : +81-3-3582-5546
FAX : +81-3-3582-7378
WEB : <http://www.jetro.go.jp>



MAFF
Ministry of Agriculture, Forestry and Fisheries

JETRO
Japan External Trade Organization



THAIFEX 2016

25 - 27 May, 2016

**IMPACT
EXHIBITION
CENTER
Hall 4**



JAPAN PAVILION BOOTH LAYOUT

W43	V44
W41	V42
W39	V40
W37	V38
W35	V36

W33	V34
W31	V32

Showcase

Japan Information Desk

X23	W24
X21	W22
X19	W20
X17	W18
X15	W16

W21	V22
W19	V20
W17	V18
W15	V16

W13	V14
W11	V12
W09	V10
W07	V08
W05	V06
W03	V04
W01	V02

JAPAN PAVILION EXHIBITOR'S LIST

Confectionery

Booth No	Exhibitor's Name	Page
CHIBA FOODSTUFF EXPORT ASSOCIATION		
V14	GRAND PLACE CORPORATION	02
Tochigi Prefectural Government		
W16	Sokan Co., Ltd.	02
W16	Semba Tohka Industries Co., Ltd.	03
W20	Hokuriku Confectionery,Ltd	03
ALL JAPAN TRADE ASSOCIATION OF CONFECTIONERY MANUFACTURERS		
X17	EIWA CONFECTIONERY CO.,LTD	04
X17	Heart Corporation	04
X19	TIVOLI CO.,LTD.	05
X19	TAISYO-SEIKA CO.,LTD.	05
X21	DENROKU CO.,LTD.	06
X21	Marukyo Co.,Ltd	06
X23	Seika Foods, Ltd	07
W24	IMURAYA CO., LTD.	07

Condiments

Booth No	Exhibitor's Name	Page
KOCHI PREFECTURAL TRADE ASSOCIATION		
V04	Graziemille Co.,Ltd.	08
V06	Hanamaruki Foods Inc.	08
V08	Miyasaka Jozo Co.,Ltd.	09
V10	Ohtsuka Chemical Industrial Co.,Ltd.	09
V16	Amari Spice Foods Co., Ltd.	10
V18	SENNARI CO., LTD.	10
V20	Takara Shoyu Co., Ltd.	11

Seafood

Booth No	Exhibitor's Name	Page
KOCHI PREFECTURAL TRADE ASSOCIATION		
V02	Shimanto unagi hanbai Co.,Ltd.	11
V02	TOSASHOKU CO.,LTD.	12
CHIBA FOODSTUFF EXPORT ASSOCIATION		
V12	Kashiwa Morisyou Co.,Ltd.	12
KOMATSU SUISAN CO.,LTD		
W01	YOJIRUSHI SUISAN CO.,LTD	13
W01	Kamewa shouten co.,Ltd	13
W03	NITTAI TSUSHO CO., LTD.	14
W05	Shimizu Shoten Co.,Ltd	14
W07	NICHIREI FRESH INC.	15
Executive Committee for Promoting Sapporo Specialty Product and Tourism Fairs in Asia		
W09	ORSON CO.,LTD.	15
W09	TANZEN TECHNICAL PRODUCT CO., LTD	16
W11	KONNO SHOJI CO.LTD.	16
AKITA Prefecture		
W35	SUZUKI SUISAN CO.,Ltd.	17

Meat

Booth No	Exhibitor's Name	Page
Yamagata International Economic Development Support Organization		
V32	Yamagata Prefecture Meat Public Corporation Co.,Ltd	17
SHIGA PREFECTURAL GOVERNMENT		
V34	Biwako food Co.,Ltd.	18
V34	OMI BEEF EXPORT PROMOTION ASSOCIATION	18
V36	DAIKICHI SHOUTEN CO.,LTD	19
W31	Ohira Chikusan Kogyo	19
W33	FUKUNAGA INDUSTRY CO., LTD.	20
AKITA Prefecture		
W35	Akita Meat Trading Center	20
W37	Stella Trading Co.,Ltd	21

Other foods, Beverage, Processed Food

Booth No	Exhibitor's Name	Page
KOCHI PREFECTURAL TRADE ASSOCIATION		
V04	Okabayashi Farm Co.,Ltd.	21
CHIBA FOODSTUFF EXPORT ASSOCIATION		
V12	Shingura.Co,Ltd	22
V14	Maruyuu Co.,Ltd.	22
MIE PREFECTURAL GOVERNMENT		
V22	YAMADAI FOOD CORPORATION	23
V22	Yamani Vinegar Co., Ltd	23
SHIGA PREFECTURAL GOVERNMENT		
V36	ayuya co., ltd.	24
V38	SHINYEI KAISHA	24
V40	Kochi ice Co., Ltd.	25
V42	ITSUKIFOODS CO.,LTD.	25
V44	Hakubaku CO., LTD.	26
Executive Committee for Promoting Sapporo Specialty Product and Tourism Fairs in Asia		
W13	MURAKI FOOD PLANNING CO.,LTD	26
W13	HOKKAIDO AGRIMART CO.LTD	27
Tochigi Prefectural Government		
W15	OBANEYA CO.,LTD.	27
W15	TOKYO NOODLE CO.,LTD.	28
W17	KATSUKI FOODS INDUSTRY CO.,LTD	28
W19	Tajimaya Foods Co.,Ltd.	29
W21	DOMOTO FOODS CO.,LTD.	29
W39	TAKAMORI KOSAN CO., LTD	30
W41	TaDa PHILOSOPHY,Inc.	30
W43	YIEM INTERNATIONAL CO., LTD.	31

Tea

Booth No	Exhibitor's Name	Page
W18	Sato Foods Industries Co.,Ltd.	31
W22	Kagoshima Seicha Co.,Ltd	32
X15	Nanzan-en Tea Corporation	32

Category



Confectionery



Condiments



Seafood



Meat



Other foods, Beverage,
Processed Food



Tea



CHIBA FOODSTUFF EXPORT ASSOCIATION GRAND PLACE CORPORATION

Contact in Japan

Address 17 Yachimata-ha, Yachimata-city,
Chiba, 289-1107 Japan

TEL +81-3-5733-6840

FAX +81-3-5733-6841

Contact Person Mr. Koji Kaise

E-mail gp-kaise@grand-place.co.jp

Website <http://grand-place.co.jp>

Certifications -

Contact in Thailand

Address No. G48. Ground Floor. Mitsui Outlet Park
KLIA Sepang, Persiaran Komersial, 64000
KLIA, Selangor Darul Ehsan, Malaysia

TEL +603-8787-1446 **FAX** +603-8787-1069

Contact Person Mr. Takahiro Gokita

E-mail gokita@fanjapan.jp

Website <http://fanjapan.asia/>

Agency FAN JAPAN (MALAYSIA) SDN BHD

Major exporting countries and regions Malaysia



Pecan Nuts Chocolate Cocoa

Pecan Nuts from U.S.A are
Lightly roasted and coated
with Belgian milk chocolate
and dusted with cocoa powder.



Pecan Nuts Chocolate Maccha

maccha powder again on the surface.

Pecan nuts from U.S.A
coated with white chocolate
in which maccha powder is
fully mixed and dusted with



Tochigi Prefectural Government Sokan Co., Ltd.

Contact in Japan

Address 4-1 Kobushidai, Yaita-shi, Tochigi-ken,
329-1579 Japan

TEL +81-287-48-3301

FAX +81-287-48-3303

Contact Person Mr. Ayumu Yada

E-mail ayumu.yada@sokan.jp

Website <http://www.sokan.jp/>

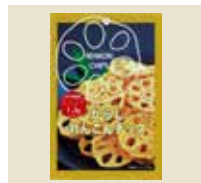
Certifications HACCP

Major exporting countries and regions Thailand, Hong Kong, Singapore,
Vietnam, USA, England



Shakishaki KUKIWAKAME (Seaweed Stem)

This is stem Wakame
seaweed. It is very good
crispy texture.
Healthy snack, which is
high dietary fiber, zero lipid and low energy.



Lotus root chips Japanese mustard taste

This is light chips food of
fried natural lotus root.
Rich dietary fiber.
Also available as a topping
for foods and appetizers for wine.



Tochigi Prefectural Government Semba Tohka Industries Co., Ltd.

Contact in Japan

Address Ueno HS Bldg, 4F 2-7-7 Ueno, Taito-ku,
Tokyo, 110-0005 Japan

TEL +81-3-5688-3151

FAX +81-3-5688-6400

Contact Person Mr. Makoto Tateno

E-mail m_tateno@sembatohka.co.jp

Website <http://www.sembatohka.co.jp>

Certifications ISO9001, ISO22000

Major exporting countries and regions Thailand, Singapore



Frozen Yam Paste (Japanese Yam)

Frozen grated Japanese
Yam which has strong
stickiness. Peeled carefully,
grated then rapidly frozen.



Frozen Dome Cake

Steamed cake which has
soft and fluffy sponge
dough with filling inside.
2 types of fillings which are
red bean and custard.

Hokuriku Confectionery, Ltd

Contact in Japan

Address 2-290-1, Oshino, Kanazawa-shi,
Ishikawa, 921-8056 Japan

TEL +81-76-243-1000

FAX +81-76-244-6686

Contact Person Mr. Shigeru Nishino

E-mail nishino@hokka.jp

Website <http://www.hokka.jp>

Certifications ISO9001:2008, HACCP

Major exporting countries and regions China, Taiwan, Hong Kong, Korea,
Singapore, Thailand



Hard Biscuit 175g

Kneading the dough for a
long period of time draws
out natural flavor of wheat
and baking it over enough
time brings out savor and aroma.



MOOMIN VALLEY Biscuit 6 packets

Lovely biscuits in the shapes
of characters that appear in
the Story of MOOMIN VALLEY.
The biscuits are crisp and
light flavored food with nutrient function claims.

X17



ALL JAPAN TRADE ASSOCIATION OF CONFECTIONERY MANUFACTURERS EIWA CONFECTIONERY CO.,LTD

Contact in Japan

Address 1-5-4 Kyodo, Setagaya-ku,
Tokyo, 156-0052 Japan

TEL +81-3-3439-5334

FAX +81-3-3439-8503

Contact Person Mr. Kazumi Nakada

E-mail k.nakada@eiwamm.com

Website -

Certifications FSSC22000

Major exporting countries and regions Hong Kong, USA, Singapore, Taiwan, Malaysia, Indonesia, Russia



Maccha Greentea Marshmallow

Our marshmallows are filled with the famous Japanese flavor 'Maccha' or 'Green Tea.' Very unique!!

X17



ALL JAPAN TRADE ASSOCIATION OF CONFECTIONERY MANUFACTURERS Heart Corporation

Contact in Japan

Address 3-14-2 Kinshi, Sumida-ku, Tokyo,
130-0013 Japan

TEL +81-3-5608-7216

FAX +81-3-5608-7217

Contact Person Mr. Takeshi Yamaoto

E-mail tyamamoto@ikawa.co.jp

Website <http://heart-ltd.jp/>

Certifications ISO 9001

Major exporting countries and regions Korea, Taiwan



GUDETAMA GUDECIOUS PUDDING

DIY pudding kit for making "GUDETAMA", the Sanrio's popular character with powder mix. Includes egg white and yolk powder mix for added fun.



SHIN-CHAN JIKKEN DRINK 7

Join SHIN-CHAN, Futabasha Publisher's popular character and the fun of science experiments with this DIY drink kit. Water changes color with each drink mix.

X19



ALL JAPAN TRADE ASSOCIATION OF CONFECTIONERY MANUFACTURERS TIVOLI CO.,LTD.

Contact in Japan

Address Doi 1-15-4, Yugawara-machi,
Kanagawa-ken, 259-0393 Japan

TEL +81-465-63-5361

FAX +81-465-60-1885

Contact Person Ms. Sakamoto Satoka

E-mail s_sakamoto@tivolicooky.com

Website <http://www.tivolicooky.com>

Certifications ISO9001

Contact in Thailand

Address 444 Phayathai Rd, | Wangmai,
Pathumwan, Bangkok, 10330 Thailand

TEL +81-90-3065-7514

Contact Person Ms. Sakamoto Satoka

E-mail s_sakamoto@tivolicooky.com

Website <http://www.tivolicooky.com>

Major exporting countries and regions Taiwan, China, Hong Kong, USA, Canada, Vietnam, Malaysia, Singapore, Poland, Myanmar, Thailand, Australia, Cambodia, Russia

RED BOX



Assorted gift cookie contains 59pcs with 16 varieties. Red box brings people deliciousness and happiness by using the best recipe & ingredients.



MOEGINO TO AJISHINO SUMIRE

Japanese style assorted gift cookie contains 56pcs with 7 varieties, using Japanese "Matcha". This contain 2 different kinds of cookies.

X19



ALL JAPAN TRADE ASSOCIATION OF CONFECTIONERY MANUFACTURERS TAISYO-SEIKA CO.,LTD.

Contact in Japan

Address 202, Nishiamagatsuka, Sennonji, Tomida-cho,
Nakagawa-ku, Nagoya, 454-0971 Japan

TEL +81-52-432-8114

FAX +81-52-432-8124

Contact Person Mr. Kotaro Matsuda

E-mail matsuda@suzuki-syokai.co.jp

Website <http://www.taisyo-seika.co.jp/>

Certifications -

Major exporting countries and regions USA, Hong Kong, Taiwan



YOKAN CASTELA SWEET CAKE

Delicious sweet cake with sweet jellied adzuki - bean paste sandwiched between castella. You can enjoy two colors of adzuki-bean paste (Green and Brown).



Swiss Baum Sweet Cake

This is a delicious small baumkuchen, very easy to eat. This item is very suitable for refreshments, perfect for any tea time.

X21

ALL JAPAN TRADE ASSOCIATION OF CONFECTIONERY MANUFACTURERS

DENROKU CO.,LTD.

Contact in Japan

Address 3-2-45, Kiyozumi-machi, Yamagata-city,
Yamagata, 990-8506 Japan

TEL +81-23-644-4423

FAX +81-23-644-4427

Contact Person Mr. Atsushi Tanaka

E-mail a-tanaka@denroku.jp

Website <http://www.denroku.co.jp>

Certifications ISO9001

Major exporting countries and regions Taiwan, Korea, Hong Kong, Singapore, Thailand



E-SIZE 40G AJI NO KODAWARI

8 delicious kinds of rice crackers & beans with sea savor. Small fish, shrimp, cuttle fish and more.



E-SIZE PLUS 25G ALMOND FISH

It's nice combination of crispy small fish packed with calcium and fragrant almonds.

X21

ALL JAPAN TRADE ASSOCIATION OF CONFECTIONERY MANUFACTURERS

Marukyo Co.,Ltd

Contact in Japan

Address Sanhaisu 2F, 3-8-7, Nakanobu,
Shinagawa, Tokyo, 142-0053 Japan

TEL +81-3-4541-4031

FAX +81-3-4541-4032

Contact Person Ms. Akiko Kamitoku

E-mail kamitoku@marukyo-seika.co.jp

Website <http://www.marukyo-seika.co.jp>

Certifications FSSC22000, ISO22000

Major exporting countries and regions North America, Europe, China, Korea



Pan Cake Dorayaki

Long Life' type pancake, dorayaki. Not only breakfast, please try eating them with a cup of coffee.



5pcs Kuri iri Dorayaki

This is the best-selling product among all of our products in the World Asian Market.

X23

ALL JAPAN TRADE ASSOCIATION OF CONFECTIONERY MANUFACTURERS

Seika Foods.,Ltd

Contact in Japan

Address 3200-7, Nishibeppu-cho,
Kagoshima city, Kagoshima,
890-8531 Japan

TEL +81-99-284-8116

FAX +81-99-282-4412

Contact Person Mr. Shinichi Yamashita

E-mail yama@seikafoods.jp

Website <http://seikafoods.jp>

Certifications -

Major exporting countries and regions USA, Thailand, Taiwan, China



Seika's 10pieces Bontan Ame

This rice candy product first went on sale in 1924. It is a healthy soft candy using

glutinous rice.



Seika's 10pieces Hyoroku Mochi

The soft texture and elastic-like rice cake fused with the flavor of white bean paste, soybean flour or

green tea powder make it truly exquisite.

W24

IMURAYA CO., LTD.

Contact in Japan

Address 1-1, Takachaya 7 chome, Tsu-city,
Mie, 514-8530 Japan

TEL +81-59-234-2658

FAX +81-59-234-2130

Contact Person Ms. Shoko Mimura

E-mail s_mimura@imuraya.co.jp

Website <http://www.imuraya.co.jp>

Certifications HACCP, ISO22000, OrganicJAS

Major exporting countries and regions USA, Hong Kong, Taiwan, Singapore



YAWA-MOCHI ICE CUP MATCHA

"Yawa-mochi" (meaning soft rice cake) Japanese ice cream with the combination of Mochi

(rice cake) and Azuki red bean paste.



HOKKAIDO TOKACHI AZUKI DAIFUKU

Flavoful Azuki red beans grown in Hokkaido Tokachi. Large white grains make the texture of the Mochi dough

soft. Fresh and delicious thanks to Rapid Freezing Technology!



KOCHI PREFECTURAL TRADE ASSOCIATION

Graziemille Co.,Ltd.

Contact in Japan

Address 5-5, Nagahama makiedai, 2-chome,
Kochi-city, Kochi, 781-0245 Japan

TEL +81-88-854-8399

FAX +81-88-855-3630

Contact Person Mr. Aika Kawahara

E-mail a.kawahara@graziemille.co.jp

Website <http://www.graziemille.info>

Certifications -

Major exporting countries and regions USA, Singapore, Hong Kong, Taiwan



Carrot dressing

Our safety first policy ensures our dressing is produced using carefully selected carrots and onions.



Ginger dressing

By adding ginger into dossari vegetables, the dressing becomes sharp in taste, aromatic, and flavorful.



Hanamaruki Foods Inc.

Contact in Japan

Address 15-4, Nihonbashikayabacho,
2-chome, Chuo-ku, Tokyo,
103-8205 Japan

TEL +81-3-5651-3339

FAX +81-3-5651-3384

Contact Person Mr. Akira Sekine

E-mail sekine@hanamaruki.co.jp

Website <http://www.hanamaruki.co.jp>

Certifications ISO9001

Contact in Thailand

Address 973 President Tower 14th Floor
Unit 14D14E

TEL +81-2-656-1619(EXT1413)

FAX +81-2-656-1619(EXT1422)

Contact Person Ms. Wanwisa Suksamran

E-mail th.hanamaruki@hotmail.com

Website <http://www.hanamaruki.co.jp>

Agency Hanamaruki (Thailand) Co., Ltd.



Liquid Shio Koji 500ml

Liquid type salt-malted rice koji is produced by fermented rice koji and salt. Enzymes in the koji bring out the umami in foods.



Dashi Iri Okaasan Miso 1kg

It is made by combining light color-type miso with aroma-rich stock made from dried bonito shavings and kelp. It features a bright yellow color and a rich flavor.



Miyasaka Jozo Co.,Ltd.

Contact in Japan

Address 2-4-3 Nogata, Nakano-ku,
Tokyo, 165-0027 Japan

TEL +81-3-3385-2123

FAX +81-3-3387-1366

Contact Person Mr. Satoshi Shigeoka

E-mail satoshi.shigeoka@miyasaka-jozo.com

Website <http://www.miyasaka-jozo.com>

Certifications ISO9001, ISO22000



FD MISO POWDER (White Miso/Red Miso/Soybean Miso)

SHINSHU powder type seasoning can be used with a variety of foods, especially miso soup or used as a secret ingredient.



Freeze Dried Freshwater Clam Powder

This shijimi extract powder is a product made from 100% freshwater clams which is well known in Japan for its health and beauty benefits .



Ohtsuka Chemical Industrial Co.,Ltd.

Contact in Japan

Address 168,Shimoosaka, Kawagoe-shi,
Saitama, 350-0812 Japan

TEL +81-49-231-1260

FAX +81-49-231-1264

Contact Person Mr. Kyoichi Uchimura

E-mail uchimuraky@otuka-ci.co.jp

Website <http://www.otuka-ci.co.jp>

Certifications ISO 22000

Contact in Thailand

Address 1780 Tiew Hong Bangna Bldg.,
Bangna-Trad Rd. Bangna, Bangkok,
10260 Thailand

TEL +66-02-399-0226-7

FAX +66-02-399-0229

Contact Person Mr. Tomoyuki Honma

E-mail homma@jfcthailand.co.th

Agency JFC(THAILAND)CO., LTD.

Major exporting countries and regions USA east central west each area, U.K., Germany, Australia, New Zealand, Hong Kong, Norway



Otsuka Suihan Miola Green

MIOLA is the best for cooking any kind of rice. You can cook puffy and shiny rice anytime with MIOLA. The rice is just as tasty even when its cooled down.



Otsuka Miola Gold

Those who want to make the best sushi rice every day are using MIOLA GOLD. The enzyme and subtle taste of kombu makes the rice ideal for Sushi.



Amari Spice Foods Co., Ltd.

Contact in Japan

Address Onoue Boueki Ueno Building 2F, 17-4,
Ueno 3-chome, Taito-ku, Tokyo, 110-0005 Japan

TEL +81-80-6204-3082

FAX +81-3-5816-8553

Contact Person Mr. Tatsuya Shimizu

E-mail shimizu@amarisp.co.jp

Website <http://www.amarisp.co.jp/>

Certifications ISO9001, GMP, HALAL

Major exporting countries and regions Hong Kong, Taiwan, China



C&A CURRY POWDER GOLD 100g

Only the best spices and herbs are selected. Well balanced by years of experience.

For dried curries, grilled chicken, curry soups, salads, dressings.



Yuzu Kosho Paste 60g

A fermented condiment with citrus aroma. Ingredients: Yuzu citrus peel, chili, salt. Suits hot pot dishes, Udon,

Sashimi, Tempura, Grilled chicken.



SENNARI CO., LTD.

Contact in Japan

Address 2683-25, Kuchi, Asa-cho,
Asakita-ku, Hiroshima,
731-3362 Japan

TEL +81-82-810-3000

FAX +81-82-810-3111

Contact Person Ms. Rika Ito

E-mail info@sennari-oochi.jp

Website <http://www.sennari-oochi.jp>

Certifications Organic JAS, ISO9001

Major exporting countries and regions Hong Kong, USA, Singapore, Taiwan



Drink vinegar series 270ml

Base is 100% juice, apple vinegar and honey are used as ingredients. You may dilute with 3-5 times of any beverage, such as water or sparkling water.



Sparkling Vinegar series 200ml

Sparkling Vinegar is excellent for people who value a healthy lifestyle. This beverage has a uniquely fruity and sour flavor.



Takara Shoyu Co., Ltd.

Contact in Japan

Address 1-4-1, Nihonbashi Kakigara-cho,
Chuo-ku, Tokyo, 103-0014 Japan

TEL +81-3-3667-3621

FAX +81-3-3669-3684

Contact Person Mr. Ryuta Osawa

E-mail ryuta.osawa@takara-shoyu.co.jp

Website <http://www.takara-shoyu.co.jp/>

Certifications FSSC22000, ISO14001

Major exporting countries and regions Singapore, Thailand, Vietnam, Korea, EU



Yakitori Sauce (Marinade and Glazing)

Available in both soy sauce base type and salt base type. We have variety of recipes, so we can adjust

the recipe according to your request as OEM.



Kara-age Bredder and Batter Mix

We can help coordinate kara-age coating and marinade sauce sets. If you are interested to develop

special kara-age, please feel free to contact us.



KOCHI PREFECTURAL TRADE ASSOCIATION

Shimanto unagi hanbai Co.,Ltd.

Contact in Japan

Address 14-40, Ikkunakamachi 1-chome,
Kochi-city, Kochi, 781-8134 Japan

TEL +81-88-856-6341

FAX +81-88-856-6343

Contact Person Mr. Koukichi Nakayama

E-mail info@shimanto-unagih.com

Website <http://www.shimanto-unagih.com>

Certifications Kochi Prefecture advanced health management certification

Major exporting countries and regions Hong Kong, Singapore, Australia



Grilled Eel

For over 50 years, our carefully raised eel are baked with our inherited secret sauce.



Grilled Eel without sauce

It is 100% pure eel taste. We send Shirayaki of the boast which pursued the soft and rich original taste of the eel.



KOCHI PREFECTURAL TRADE ASSOCIATION TOSASHOKU CO.,LTD.

Contact in Japan

Address 543 Misaki, Tosashimizu-city,
Kochi, 787-0450 Japan

TEL +81-880-85-1515

FAX +81-880-85-1511

Contact Person Mr. Naoki Hosoi

E-mail himekatsuo@u-broad.jp

Website <http://www.tosashoku.co.jp>

Certifications Kochi Prefecture version HACCP

Major exporting countries and regions USA, Taiwan, Hong Kong, China



Dashi Broth for Omelette Dashi-soy sauce taste

You can easily cook
Souda-Dashi omelettes at
home.

To enjoy the taste of this

Souda Dashi broth in an omelette, simply mix it with
three eggs and cook.



Hime Bonito Rice

Mash and squeeze out the
desired amount of bonito
mix straight from the pouch
and stir into freshly cooked
white rice(700g).



CHIBA FOODSTUFF EXPORT ASSOCIATION Kashiwa Morisyoun Co.,Ltd.

Contact in Japan

Address 69-1 Wakashiba, Kashiwa-city,
Chiba, 277-0871 Japan

TEL +81-4-7132-7007

FAX +81-4-7134-1277

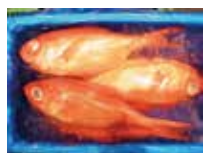
Contact Person Mr. Naohiko Sakamaki

E-mail n-sakamaki@kashiwa-morisyoun.co.jp

Website -

Certifications -

Major exporting countries and regions -



Wild Alfonsino (Wild Kinmedai Whole)

Sashimi, grill and any other
ways of the cooking are very
good, especially the boiled
fish is excellent.



Japanese high-quality fresh fish

We are concentrating on
enhancing our distribution
network from landing port
to stores through the

Kashiwa fish market, which is our main supplier and
other fish markets in Japan and to make the best
effort to realize a wide variety of and safe merchandise.



KOMATSU SUISAN CO.,LTD YOJIRUSHI SUISAN CO.,LTD

Contact in Japan

Address 410 Hiraiso, Hitachinaka-shi, Ibaraki,
311-1203 Japan

TEL +81-29-262-3113

FAX +81-29-263-6780

Contact Person Mr. Yasushi Isozaki

E-mail y-isozaki@yojirushi.co.jp

Website <http://www.yojirushi.co.jp>

Certifications HACCP

Major exporting countries and regions USA



Steamed Octopus

Using common octopus
imported from African, it is
steamed with its own
original recipe not allowing

the taste of octopus to escape. You can use it in
salads and marinades.



Three kinds of Seasoning Octopus

Steamed African octopus is
chopped and then pickled
in three kinds of seasonings.
Delicious in salads or as a
snack!

KOMATSU SUISAN CO.,LTD Kamewa shouten co.,ltd

Contact in Japan

Address 2-1, Tsukiji 5-chome, Chuo-ku, Tokyo,
104-0045 Japan

TEL +81-3-3542-1453

FAX +81-3-3541-3830

Contact Person Mr. Kazuhiko Wada

E-mail wada@kamewa.co.jp

Website <http://www.kamewa.co.jp/>

Certifications MSC

Major exporting countries and regions Singapore



fresh fish

Sea bream, Japanese
flatfish, Sea bass, etc.



NITTAI TSUSHO CO., LTD.

Contact in Japan

Address Boeki Building 9F, 123-1, Higashimachi, Chuo-ku, Kobe, 650-0031 Japan

TEL +81-78-321-8931

FAX +81-78-321-8934

Contact Person Mr. Akihiko Matsushita

E-mail nittai@pearl.ocn.ne.jp

Website -

Certifications -

Contact in Thailand

Address No. 97 Soi Sukhumvit 38, Sukhumvit Rd., Prakanong, Klongtoey, Bangkok, 10110 Thailand

TEL +81-2-391-4507

FAX +81-2-391-4508

Contact Person Mr. Naoya Namigai

E-mail naoyan@probitrading.com

Website -

Agency PROBITY TRADING CO., LTD.



Half Shell Frozen Oyster

Our frozen oysters can be eaten "RAW" even after defrosted while its natural taste is preserved without

any odor thanks to our freezing technology.



Smoked Soft Roes of Flathead Mullet

The delicious taste of soft roes of flathead mullet caught in the Harima-nada ocean is sealed by smoking.

It is well suited to any alcoholic drinks.



Shimizu Shoten Co.,Ltd

Contact in Japan

Address 6881-72, Isohama, Oarai, Higashi-Ibaraki, Ibaraki, 311-1301 Japan

TEL +81-29-266-2211

FAX +81-29-266-2215

Contact Person Mr. Eiki Shimizu

E-mail eiki-s@maruyo-seafoods.co.jp

Website <http://www.shi-mi-zu.net/>

Certifications HACCP

Major exporting countries and regions USA, Thailand, Singapore, Malaysia, Vietnam, Dubai, Qatar, Hong Kong



Steamed octopus caught in Nagasaki prefecture

The product is cooked in two stages consisting of (1) steaming using a special high-pressure steamer and (2) boiling.



Boiled squid

It won the top honor, taking home the "Minister of Agriculture, Forestry and Fisheries Award," in the

22nd National Processed Seafood Quality Examination.



NICHIREI FRESH INC.

Contact in Japan

Address Nichirei Higashi-ginza Building, 6-19-20, Tsukiji, Chuo-ku, Tokyo, 104-8402 Japan

TEL +81-3-3248-2177

FAX +81-3-3248-2141

Contact Person Mr. Ryota Fujimoto

E-mail n1030x014@nichirei.co.jp

Website <http://www.nichireifresh.co.jp/en/recipe>

Certifications ISO9001:2008

Major exporting countries and regions USA, China, Hong Kong, Korea, Taiwan, Thailand, Vietnam, Singapore, France, Ghana, etc.



Japanese Cooked Baby Scallop

Just thaw and serve! Easy preparation for variety of menu!

Only live scallops are processed. Enjoy their rich, sweet flavor and firm texture!



Japanese Omega Balance Beef

New kind of breed which has Omega3. You can get a well balance between the smooth

marbling and the benefits of beef fat packed with Omega fatty acid.

Executive Committee for Promoting Sapporo Specialty Product and Tourism Fairs in Asia ORSON CO.,LTD.

Contact in Japan

Address Nihonbashi-Odenmachi Building 3F, Nihonbashi-Odenmachi 3-3, Chuo-ku, Tokyo, 103-0011 Japan

TEL +81-3-3808-1261

FAX +81-3-3808-1262

Contact Person Mr. Masaki Shibuya

E-mail ee3@orson.co.jp

Website <http://www.orson.co.jp/>

Contact in Thailand

Address -

Contact Person Mr. Masaki Shibuya

E-mail ee3@orson.co.jp

Certifications HACCP

Major exporting countries and regions Hong Kong, Taiwan



Roasted scallop

Roasted scallop is a best-selling product in East Asian markets. Give it a try-you're bound to love the

rich yet mellow scallop taste.



Hokkaido Camambert cheese stick

A stick of camembert cheese produced in Hokkaido. Enjoy the velvety sensation as it melts in your mouth.



Executive Committee for Promoting Sapporo Specialty Product and Tourism Fairs in Asia

TANZEN TECHNICAL PRODUCT CO., LTD

Contact in Japan

Address Zenibako 5-52-11, Otaru, Hokkaido, 061-3271 Japan

TEL +81-133-74-8651

FAX +81-133-74-8652

Contact Person Mr. Yoshiki Takahashi

E-mail takahashi-k@tanzen.co.jp

Website <http://www.tanzen.co.jp>

Major exporting countries and regions Taiwan, Hong Kong, Mongolia, Singapore, Indonesia, Korea, USA



Flavorful rice mix (retort pouch)

This Japanese staple dish can be enjoyed anytime thanks to the ample blend of ingredients in one pack - just mix with rice and savor Japan's true flavor.



Grilled/boiled fish (retort pouch)

Grilled and boiled fish are staples at the Japanese dinner table. Simply warm up the pouch to savor the genuine taste of Japanese cuisine.



Executive Committee for Promoting Sapporo Specialty Product and Tourism Fairs in Asia

KONNO SHOJI CO.LTD.

Contact in Japan

Address Hachiken 1-jo 5-chome 3-9, Nishi-ku, Sapporo, Hokkaido, 063-0861 Japan

TEL +81-11-688-6800

FAX +81-11-688-6805

Contact Person Mr. Shota Konno

E-mail info@konnoshouji.jp

Website <http://www.konnoshouji.jp>

Major exporting countries and regions Thailand, Hong Kong



HOKKAIROMAN ICHIBATEI

Carefully selected ingredients to ensure the freshest quality. Painstakingly grilled to provide the most authentic Japanese flavor.



AKITA Prefecture SUZUKI SUISAN CO.,Ltd.

Contact in Japan

Address 72-3 Aza Isomura, Hachimori, Happo-cho, Yamamoto-gun, Akita, 018-2676 Japan

TEL +81-185-77-2217

FAX +81-185-77-3601

Contact Person Mr. Hiroyuki Momiyama

E-mail hatahata@suzuki-suisan.co.jp

Website <http://www.suzuki-suisan.co.jp>

Certifications -

Contact in Thailand

Address Level 8, Zuellig House, 1Sirom Road, Bangrak, Bangkok, 10500 Thailand

TEL +66-2-231-8382

FAX -

Contact Person Mr. Kenji Tanaka

E-mail kenji.tanaka0814@gmail.com

Website -

Agency Southeast Asia Liaison Office Akita, JAPAN



Hatahata Oil Pickles Plum and Fish sauce flavor

Locally caught Hatahata (Sandfish) in oil. It's easy to carry, store & serve. Good for Italian cuisine.

Also available in 2 other flavors (Herb, Garlic)



HATAHATA CAVIAR

Locally caught Hatahata (Sandfish) caviar in glass jars. Naturally hard in texture but softens with

special processing. Good for hors d'oeuvre.



Yamagata International Economic Development Support Organization

Yamagata Prefecture Meat Public Corporation Co.,Ltd

Contact in Japan

Address 936, Aza Matoba, Oaza Nakano, Yamagata-city, Yamagata, 990-0892 Japan

TEL +81-23-684-5656

FAX +81-23-684-5659

Contact Person Mr. Toshio Igarashi

E-mail t_igarashi@ysyokuniku.jp

Website <http://www.ysyokuniku.jp/>

Contact in Thailand

Address ITF TOWER 9thFL 140/8 Silom Rd, Suriyawong, Bangrak, Bangkok, 10500 Thailand

TEL +66-2-634-0256

FAX +66-2-634-0257

Contact Person Mr. Shintaro Masuda

E-mail shin_th@hotmail.com

Agency Mercato Co., Ltd.

Major exporting countries and regions Thailand, Hong Kong



Yamagata Beef

"Yamagata Beef" features a fine texture and fat with a low melting point, and tastes sweet.

It's one of the most recognizable brands of beef in Japan.



SHIGA PREFECTURAL GOVERNMENT

Biwako food Co.,Ltd.

Contact in Japan

Address 917, Nishourai-cho, Omihachiman-city,
Shiga, 523-0004 Japan

TEL +81-748-37-0131

FAX +81-748-37-5700

Contact Person Mr. Kazuo Sano

E-mail info@biwakofood.jp

Website http://www.biwakofood.jp/

**Major exporting -
countries and regions**



Omi Beef

We can tailor make any primal cut to fulfill your request.



SHIGA PREFECTURAL GOVERNMENT

OMI BEEF EXPORT PROMOTION ASSOCIATION

Contact in Japan

Address 1089-4 ChoKojicho, Omihachiman-shi,
Shiga, 523-0013 Japan

TEL +81-748-57-1300

FAX +81-748-57-0193

Contact Person Mr. Takao Sawai

E-mail ohmiushi-sawai@snow.plala.or.jp

Website -

**Major exporting
countries and regions** Thailand, Singapore, Philippines,
Hong Kong



Omibeef Chuck

Texture is delicately soft and taste and marbling.



Omibeef sirloin

It is the best silky marbled meat around.



SHIGA PREFECTURAL GOVERNMENT

DAIKICHI SHOUTEN CO.,LTD

Contact in Japan

Address 252 Tanaka, Adogawa-cho,
Takashima-city, Shiga, 520-1217 Japan

TEL +81-740-32-0001

FAX +81-740-32-2908

Contact Person Mr. Takehisa Nagatani

E-mail info@1129.co.jp

Website http://www.1129.co.jp/

Certifications HACCP

**Major exporting
countries and regions** Thailand, Hong Kong, Singapore,
Vietnam, Macau



omibeef roin set

Offering high quality Rib loin and Sir loin in sets. Steaks, grilled meats, sukiyaki, shabu-shabu are all available.



omibeef yakiniku karubi set

Roast Karubi is reasonable items relatively. Recommended for barbecue-style restaurants.

Ohira Chikusan Kogyo

Contact in Japan

Address Sasagawa north 8-12-10, Shikaoi,
Katogun, Hokkaido, 081-0204 Japan

TEL +81-156-66-3493

FAX -

Contact Person -

E-mail -

Website http://www.ohirabeef.com

Contact in Thailand

Address 5/15 Sukhumvit 49, Klongton-nua,
Wattana, Bangkok, 10110 Thailand

TEL +66-83-542-3199

FAX -

Contact Person Ms. Mariko Kawai

E-mail -

Agency Peko co.,ltd.

**Major exporting
countries and regions** Thailand



Frozen Japanese Beef

We are best farmers in Hokkaido that utilize sustainable ranching methods to produce the highest quality, most flavorful product found on the market.



FUKUNAGA INDUSTRY CO., LTD.

Contact in Japan

Address 2434 Hirowatari, Onga-cho,
Onga-gun, Fukuoka,
811-4302 Japan

TEL +81-93-293-2299
FAX +81-93-293-2255

Contact Person Mr. Shinji Fukunaga

E-mail info@fukunaga-brand.co.jp

Website http://www.fukunaga-brand.co.jp/

Certifications ISO9001, ISO22000, SQF(Level 3)

Contact in Thailand

Address 98-102 PANAWONGS BUILDING, 6TH FL,
ROOM 602, SURAWONGS RD., BANGRAK,
BANGKOK, 10500 Thailand

TEL +66-2-637-0599, +66(09)2278-5725
FAX +66-2-637-0595

Contact Person Mr. Yoshitaka Higashi

E-mail higashi@yamagoyathailand.com

Website http://www.yamagoyathailand.com/

Agency YAMAGOYA (THAILAND) CO., LTD.

Major exporting countries and regions Thailand



JAPANESE BEEF (Half Wagyu) "KAMUI GYU"

KAMUI GYU is an authentic crossbred cattle beef produced in Japan, in pursuit of taste and flavor as close as possible to WAGYU (Japanese beef).



JAPANESE BEEF (Wagyu) "KAGOSHIMA WAGYU"

The assured, safe, and delicious KAGOSHIMA WAGYU is the best brand that Kagoshima boasts to the world.



AKITA Prefecture

Akita Meat Trading Center

Contact in Japan

Address 2-1, Dousaka, Kawabe-Jinnai, Akita
019-2631 Japan

TEL +81-1-8882-3462
FAX +81-1-8882-3784

Contact Person Mr. Ryouichi Ohmiya

E-mail ohmiya@asrk.co.jp

Website http://akitasmile.com/index.htm

Certifications HACCP

Contact in Thailand

Address 323 Soi Ja-sode, Bangna, Bangkok,
10260 Thailand

TEL +66-9-4694-8694 **FAX** -
Contact Person Mr. Chairat Deesombunsuk

E-mail deesombu@hotmail.com

Website http://www.noblemono.com/

Agency NobleMono Co., LTD.

Major exporting countries and regions Thailand



AKITA Beef

Farmers fed Akita's rice to their cattle for better calorie control, thus successfully achieving "higher marbled" meat by extending the raising period (up to 30 months).



Stella Trading Co., Ltd

Contact in Japan

Address Tomono Honsha Building 7F
12-4, 7-chome, Ginza, Chuo-ku,
Tokyo, 104-0061 Japan

TEL +81-3-3542-8553
FAX +81-3-3545-5470

Contact Person Mr. Tatsuya Nakano

E-mail nakano@stella-trading.com

Website http://kurogewagyu.jp

Certifications -

Contact in Thailand

Address Newland 2F 25/2 Soi 33 Sukhumvit Rd.,
Klongton-Nua, Wattana,
Bangkok, 10110 Thailand

TEL +66-2-662-1849 (representative)
FAX +66-2-662-0341

Contact Person Mr. Masashi Sakai

E-mail info@jssiam.com

Website http://www.japanese-beef.com/

Agency JS Siam International Co., Ltd.

Major exporting countries and regions Thailand, Vietnam



Japanese Wagyu Beef (Kuroge Wagyu Grade:A5/A4)

Once you taste "Wagyu" beef you will never forget it because of its juicy and refined taste. We provide best quality "Wagyu" from selected farms.



Fresh Sea Food & Sea Food Processing

Japanese Sushi is very popular across the world today. Please try our fresh sushi items such as Hotate, Amaebi & Ikura from the famous Tokyo Tsukiji Market.



AKITA Prefecture

Akita Meat Trading Center

Contact in Japan

Address 2-1, Dousaka, Kawabe-Jinnai, Akita
019-2631 Japan

TEL +81-1-8882-3462
FAX +81-1-8882-3784

Contact Person Mr. Ryouichi Ohmiya

E-mail ohmiya@asrk.co.jp

Website http://akitasmile.com/index.htm

Certifications HACCP

Contact in Thailand

Address 323 Soi Ja-sode, Bangna, Bangkok,
10260 Thailand

TEL +66-9-4694-8694 **FAX** -
Contact Person Mr. Chairat Deesombunsuk

E-mail deesombu@hotmail.com

Website http://www.noblemono.com/

Agency NobleMono Co., LTD.

Major exporting countries and regions Thailand



KOCHI PREFECTURAL TRADE ASSOCIATION

Okabayashi Farm Co., Ltd.

Contact in Japan

Address 750, Aso, Ochi-cho, Takaoka-gun,
Kochi, 781-1325 Japan

TEL +81-889-27-2205
FAX +81-889-27-2009

Contact Person Mr. Satoshi Tsutsui

E-mail office@buntan-ok.com

Website http://www.buntan-ok.com

Certifications Thailand FDA

Contact in Thailand

Address No. 2/41-43, 9th Fl, Bangna Complex Office
Tower, Soi Bangna-Trad 25, Bangna, Bangkok,
10260 Thailand

TEL +66-2744-1450-1 **FAX** +66-2744-1452,
+66-2744-1934

Contact Person Ms. Usa

E-mail usa@daihothai.com

Website http://www.daihothai.com

Agency Daiho(Thailand) Co., Ltd.

Major exporting countries and regions Australia, Indonesia, Italy, Singapore



Yuzu Juice 1.85kg

Yuzu has 3 times more vitamin C than lemon. It is also used to flavor dishes such as meat, fish, vegetable, noodle, or dessert and drinks.



Yuzu Syrup 2kg

This is a syrup made from blending sugar beet and straight yuzu juice. To drink, dilute with 6 parts water.

• mix it with water, soda, beer or sake.
• pour it over ice cream, shaved ice, yogurt, and so much more.



CHIBA FOODSTUFF EXPORT ASSOCIATION

Shingura.Co,Ltd

Contact in Japan

Address 423-1 Amatsu, Kamogawa,
Chiba, 299-5503 Japan

TEL +81-4-7094-0163

FAX +81-4-7094-0393

Contact Person -

E-mail info@shingura.co.jp

Website http://shingura.jp/

Certifications ISO 9001 2008

Contact in Thailand

Address Lot L1.01 First Floor, Plaza Armada,
Armada PJ, Lot 6 Lorong Utama C,
46200 Petaling Jaya, Selangor, Malaysia

TEL +603-7664-1131 **FAX** +603-7955-6362

Contact Person Ms. Yuko Saito

E-mail saitoy@shingura.com

Website http://www.shingura.com

Agency Cahaya Shingura Sdn Bhd

Major exporting countries and regions Singapore, Hong Kong



Oh!Musubi (Soft-Steamed Japanese Brown Rice)

Delicious Soft Steamed Brown Rice can be cooked in a normal pot. It's a great invention.



Nagasa rice koshihikari.

Nagasa rice 'Koshihikari' was born from a selection of the finest rice.



CHIBA FOODSTUFF EXPORT ASSOCIATION

Maruyuu Co.,Ltd.

Contact in Japan

Address 1703 Yamamoto, Kimitsu-city,
Chiba, 292-0401 Japan

TEL +81-4-3935-2267

FAX +81-4-3935-3589

Contact Person Mr. Hidenori Konishi

E-mail h-konishi@maruyufoods.co.jp

Website http://maruyufoods.co.jp/

Major exporting countries and regions Hong Kong, Southeast Asia



Atsuyakitamago

The Tamagoyaki, which is one of most popular items among famous Japanese cuisine "Sushi", have been produced at our own factory over last 30 years.



Sakuradenbu

In Japan, Sakuradenbu is used as an ingredient for chirashi zushi, rolled sushi as well as being sprinkled over rice.



MIE PREFECTURAL GOVERNMENT

YAMADAI FOOD CORPORATION

Contact in Japan

Address 2-8-19 Tomida, Yokkaichi-shi, Mie,
510-8014, Japan

TEL +81-3-5791-3788

FAX +81-3-5791-3789

Contact Person Ms. Hitomi Suzuki

E-mail hitomi_s@yamadai.jp

Website http://www.yamadai.jp/eng/

Certifications ISO9001

Major exporting countries and regions USA, England, France, Denmark, Thailand



Japanese Spinach with Sesame Sauce

You only have to defrost and can make an authentic Japanese dish. Japanese spinach and carrot dressed with deep roasted sesame.[1kgx12 bags/carton]



Cube cut candied sweet potato

Frozen sweet potato dressed with crunchy candy. It is popular with women of all ages as a bite-size dessert.[800gx16bags/carton]



MIE PREFECTURAL GOVERNMENT

Yamani Vinegar Co., Ltd

Contact in Japan

Address 2476 Tsuoki, Akogicho, Tsu, Mie,
514-0811 Japan

TEL +81-59-225-2321

FAX +81-59-225-2302

Contact Person Mr. Kuniaki Iwahashi

E-mail hello@yamani-vinegar.com

Website http://www.yamani-vinegar.com

Certifications Japanese Agricultural Standard of Vinegar

Major exporting countries and regions Singapore, Malaysia, Taiwan



Flavored Vinegar

Flavored Vinegar made from Yamani Vinegar's secret recipe. Useable in a wide variety of ways, including marinated and vinegared dishes.



Solt Ponzu Sauce

Citrus "Ponzu" sauce that makes use of the highest-grade ingredients.



SHIGA PREFECTURAL GOVERNMENT

ayuya co., ltd.

Contact in Japan

Address 4187, Yoshikawa, Yasu-shi, Shiga,
524-0292 Japan

TEL +81-77-589-6155

FAX +81-77-589-4762

Contact Person Mr. Yoshihiro Shirai

E-mail shiirebu2@ayuya.co.jp

Website <http://www.ayuya.co.jp/>

Certifications -



ayuya's sockeye salmon koyo roll

Using seaweed from the Hokkaido region and North Pacific Ocean red salmon, both complement each

other in producing a juicy yet delicate taste.



ayuya's soy milk sesame tofu (white sesame seeda, black sesame seeds, matcha, adzuki)

Currently in 4 kinds: soy milk white & black sesame tofu, matcha, and adzuki. Each 55g serving can be stored at room temperature and is ready to eat..



SHINYEI KAISHA

Contact in Japan

Address 77-1, Kyomachi, Chuo-Ku, Kobe,
651-0178 Japan

TEL +81-78-771-7004

FAX +81-78-332-3127

Contact Person Mr. Takehiro Odagiri

E-mail t-odagiri@sk.shinyei.co.jp

Website <http://www.shinyei.co.jp/>

Contact in Thailand

Address 1401/3, 14TH FLOOR, GLAS HAUS BUILDING,
1 SUKHUMVIT 25, SUKHUMVIT ROAD,
KLONGTOEY NUE, WATTANA, BANGKOK

TEL +66-2-258-2547 **FAX** +66-2-258-2548

Contact Person Ms. Parattakorn Singhapanit (Poy)

E-mail poi@skt.shinyei.co.th

Website <http://www.shinyei.co.th/>

Agency SHINYEI (THAILAND) CO., LTD.

**Major exporting
countries and regions** Thailand



Danshaku (Irish Clobber potato) Croquette

Danshaku croquette uses only the highest quality potatoes and milk produced in the Hokkaido region.

A delicious croquette proudly "Made in Hokkaido". Please enjoy the taste.



Vegetable Croquette

This vegetable croquette uses only the highest quality potatoes and milk produced in the Hokkaido

region. A delicious croquette proudly "Made in Hokkaido". Please enjoy the taste.



Kochi ice Co., Ltd.

Contact in Japan

Address 683 Shimoyakawa otsu, Ino-cho, Agawa-gun,
Kochi, 781-2332 Japan

TEL +81-88-850-5288

FAX +81-88-850-5481

Contact Person Mr. Fumiya Hamamachi

E-mail mail@kochi-ice.com

Website <http://www.kochi-ice.com>

Certifications Nippon Asia Halal Association, HALAL Authentication

**Major exporting
countries and regions** Thailand, Singapore, Malaysia,
Hong Kong, Australia,
USA (including Hawaii), Taiwan, Brazil



Yuzu sherbet

The sherbet is made from yuzu juice from Kochi Prefecture and incorporates the refreshing fragrance of

yuzu with just the right amount of sourness.



Yuzu juice

100% yuzu juice of Kochi Prefecture. The strong aroma and sour taste make your cuisine taste better.

You may mix this with plain water or shochu.
sourness.



ITSUKIFOODS CO.,LTD.

Contact in Japan

Address 945 Sakano, Jonan-machi, Minami-ku,
Kumamoto-city, Kumamoto, 861-4201 Japan

TEL +81-964-28-7000

FAX +81-964-28-7007

Contact Person Mr. Hideo Ogata

E-mail ogata.h@itsukifoods.jp

Website <http://www.itsukifoods.jp/>

Certifications ISO9001·2008

**Major exporting
countries and regions** More than 60 countries



YAKISOBA 3 w/SAUCE

Japanese fried noodle "Yakisoba" with thick soy sauce based spicy flavor.

Add veggies, pork, egg, or anything in the refrigerator to enhance nutrition.



CUP KITSUNE UDON

Thick and chewy wheat noodles with a lovely, fluffy piece of seasoned fried tofu and a soy sauce, bonito

flake and wakame seaweed broth.



Hakubaku CO., LTD.

Contact in Japan

Address 1351 Saishoji, Fujikawa-cho, Minamikomagun, Yamanashi, 400-0598 Japan

TEL +81-556-22-8957

FAX +81-556-22-4899

Contact Person Mr. Kazuhiro Kaneko

E-mail kaneko.kazuhiro@hakubaku.co.jp

Website <http://www.hakubaku.co.jp>

Certifications ISO9001, ISO14001

Major exporting countries and regions Singapore, Kuala Lumpur, Bangkok, China, Hong Kong, USA



Rice Style Barley

By removing the black striation and processing barley into the same shape as rice we have made barley

easier for beginners to eat for the first time.



HONEBUTO KAZOKU

This item is calcium enriched barley. It's easy for beginners to eat because of using rice shaped barley.

You can take about 420mg calcium by per pack.



Executive Committee for Promoting Sapporo Specialty Product and Tourism Fairs in Asia

MURAKI FOOD PLANNING CO.,LTD

Contact in Japan

Address HKita 45-jo Higashi 17-chome 3-12, Higashi-ku, Sapporo, Hokkaido, 007-0845 Japan

TEL +81-11-781-1400

FAX +81-11-781-9362

Contact Person Mr. Masamichi Kikuchi

E-mail s-morizumi@nyc.odn.ne.jp

Website <http://www.morizumiseimen.com>

Major exporting countries and regions USA, Hong Kong, Korea, Singapore



"SUMIRE" 1pc Miso flavor Instant Ramen

"SUMIRE" is a long-standing Sapporo ramen restaurant founded in 1964.

This instant noodle product

does not use animal derived ingredients.



KABUKIRAMEN Instant Ramen MISO&SOYSAUCE flav. 4pc

This instant noodle souvenir product is themed on the Japanese traditional art of Kabuki.

This product does not use animal derived ingredients.



Executive Committee for Promoting Sapporo Specialty Product and Tourism Fairs in Asia

HOKKAIDO AGRIMART CO.LTD

Contact in Japan

Address Osatsunai 381-10, Urausu-cho, Kabato-gun, Hokkaido, 061-0600 Japan

TEL +81-125-67-3777

FAX +81-125-67-3767

Contact Person Mr. Harutoshi Satake

E-mail agrimart-satake@chime.ocn.ne.jp

Website <http://www.kitaiti.com/agrimart/index.html>

Major exporting countries and regions



Tasty letter from Hokkaido (Mini tomato juice)

Additive-free, 100% fruit juice. Tomatoes carefully selected by their variety and source - so rich and sweet

you'll feel you're eating juice.



Tasty letter from Hokkaido (Non-alcoholic wine)

100% fruit juice, No Additives. This straight juice is a non-alcoholic wine giving the natural aroma of

grapes that even adults will love.



Executive Committee for Promoting Sapporo Specialty Product and Tourism Fairs in Asia

TOCHIGI PREFECTURAL GOVERNMENT

OBANEYA CO.,LTD.

Contact in Japan

Address 1747-1 Hitotonoya, Oyama-city, Tochigi, 323-0827 Japan

TEL +81-285-28-6878

FAX +81-285-28-6908

Contact Person Mr. Bao Zhong

E-mail gobou@obaneya.co.jp

Website <http://www.obaneya.co.jp/>

Certifications U.S.FDA FCE Registration (Aofc:FCE)

Major exporting countries and regions USA, Hong Kong, Korea, Singapore



Bonita Flavored Burdock Root Pickles

Japanese young burdock is thoroughly pickled in bonito sauce for a considerable period of time.



Burdock With Plum Sauce

Japanese young burdock is thoroughly pickled in plum sauce for a considerable period of time.

No coloring or preservatives used.



Tochigi Prefectural Government TOKYO NOODLE CO.,LTD.

Contact in Japan

Address 1079-1 Fukui-cho, Asikaga-shi, Tochigi,
326-0338 Japan

TEL +81-284-70-1270

FAX +81-284-70-1277

Contact Person Mr. Kazuo Suzuki

E-mail k-suzuki@tokyo-ramen.com

Website <http://www.tokyo-ramen.com>

Certifications ISO22000

Major exporting countries and regions Hong Kong, Korea, China, Singapore, USA, England



TOKYO NOODLE CHICKEN FLAVOR

Small size Instant Flavored Noodles 4pack series. Perfect size to go with lunch, dinner or just a snack.



MINICUP PEPERONCINO

Mini Cup Instant Noodle. Italian Spaghetti style noodles flavored with salt, garlic and red pepper.



KATSUKI FOODS INDUSTRY CO.,LTD

Contact in Japan

Address 1-3-12, Nakakasai, Edogawa-ku,
Tokyo, 134-0083 Japan

TEL +81-3-3680-3211

FAX +81-3-3680-3281

Contact Person Mr. Junji Hirotsuji

E-mail hiro@katsuki-foods.co.jp

Website <http://www.katsuki-foods.co.jp/>

Major exporting countries and regions Taiwan, Taipei, Hong Kong



SWEETENED BOILED WALNUTS AND SAND LANCE BY SOY

Winning the Monde Selection Gold Award for 6 consecutive years, it is our company's trademark product.



SWEETENED BOILED WALNUTS BY SOY

Carefully selected large grain walnuts combined with sweet nectar.



Tajimaya Foods Co.,Ltd.

Contact in Japan

Address 139-7, Ikejiri, Itami-shi, Hyogo,
664-0027 Japan

TEL +81-72-777-3939

FAX +81-72-772-5167

Contact Person Mr. Kensaku Yamaoka

E-mail yamaoka-k@tajimaya-foods.co.jp

Website <http://www.tajimaya-foods.co.jp/>

Certifications ISO9001, HACCP

Major exporting countries and regions



KARATTO TOFU (FRIED TOFU)

It is vegan food purely using only 100% vegetable protein which is mainly soy protein. As close in taste and texture to chicken as you can get.



SMOKED TOFU 'TOFU-KUN'

Tofu rich in high-quality protein is full of flavor. The smoked flavor goes perfectly with your favorite alcoholic beverage.

DOMOTO FOODS CO.,LTD.

Contact in Japan

Address 4-18-2, Tomo-Chuo, Asaminami-ku,
Hiroshima, 731-3165 Japan

TEL +81-82-848-1155

FAX +81-82-848-4389

Contact Person Ms. Saori Kaifu

E-mail sa-kaifu@domoto.co.jp

Website <http://www.domoto.co.jp>

Certifications ISO9001, ISO22000, HACCP

Contact in Thailand

Address 1400/1 Pornpailin Village Soi Sukhumvit
101/1 Kwang Bangchak Khet Prakanong
Bangkok, 10260 Thailand

TEL +66-2-748-1106 **FAX** +66-2-748-1107

Contact Person Mr. Choosak Lai

E-mail choosak@thaidomoto.co.th

Agency Thai Domoto Co.,Ltd.

Major exporting countries and regions Thailand, Hong Kong, Holland, Malaysia, Singapore, Vietnam



LAVER BOILED DOWN IN SOY SAUCE WITH WAKANE SEAWEED

Serve with white rice, or used for cuisine arrangement is also suitable. Flavored with a sweet taste, easy to eat. Beautiful green color.



COOKED SAURY WITH SOY SAUCE

The Saury fish is from Japan. Japanese Saury is very oily and delicious. It has a very good soy sauce taste. Ready to eat right out of the pack.



TAKAMORI KOSAN CO., LTD

Contact in Japan

Address 2800-2 Kimigasato, Masunaga,
Arao-shi, Kumamoto,
864-8501 Japan

TEL +81-968-64-1119

FAX +81-968-64-1117

Contact Person Mr. Yuji Hashimoto

E-mail info@takamori-kosan.com

Website <http://www.takamori-kosan.com>

Certifications -

Contact in Thailand

Address Prairie Marketing Limited 1 Mahavivat Building
4 Fl., Soi Krungthep Kreetha 2 (Lerdnava),
Huamark, Bangkok, Bangkok, 10240 Thailand

TEL +66-2-379-3191 **FAX** +66-2-379 4711

Contact Person Ms. Sukanya Chindakitnukul

E-mail sukanya@praiiem.com

Website <http://praiiem.com>

Major exporting countries and regions Hong Kong, Thailand, Taiwan, China, Korea, Singapore, Brazil, USA, Indonesia, Cambodia, Australia, New Zealand, South Africa, England, Germany, Philippines, Spain, Portugal,



Sauce Yakisoba 3 Packs, English Package

"Long Life Noodle"
Yakisoba, including sauce
mix have a shelf life of 12
months at room

temperature. Full English package for international
customers.



Sanuki Udon 5 Packs, English Package

"Long Life" Noodle Sanuki
UDON have a shelf life of 12
months at room
temperature. Full English

package for international customers.



TaDa PHILOSOPHY, Inc.

Contact in Japan

Address 271-1 Enami-Koenami, Minami Awaji-city,
Hyogo, 656-0425 Japan

TEL +81-799-42-2231

FAX +81-799-42-1357

Contact Person Mr. Toshikazu Fukushima

E-mail info@e-moshio.com

Website <http://www.e-moshio.com>

Major exporting countries and regions Thailand, Singapore, Hong Kong, Taiwan



PREMIUM Moshio of Awaji Island

A salt craftsman uses
domestic seaweed with
seawater in Awajishima, and
is Moshio of PREMIUM-type

who bet long time and boiled it carefully. It's
popularity comes from its full-bodied fragrance of
faint seaweed and mellow taste.



Bonito very taste dashi KINNOKIWAMI

A domestic raw ingredient
and flavorful Japanese soup
stock with Moshio in
Awajishima. Simply used in

a teabag, anyone can enjoy the real Japanese-style
restaurant taste at home.



YIEM INTERNATIONAL CO., LTD.

Contact in Japan

Address Tensho Minami-Aoyama Bldg 2F,
2-4-15 Minami-Aoyama, Minato-ku,
Tokyo, 107-0062 Japan

TEL +81-3-6721-1260

FAX +81-3-6701-2748

Contact Person Mr. Hiroshi Sasaki

E-mail info@yiem.co.jp

Website <http://www.yiem.co.jp>

Certifications -

Contact in Thailand

Address 2 houses Mansion 642 Ratchada Soi 13
Kwang Dindaneg Khet Dindaeng Bkk 10400

TEL +66-9-8329-7004 **FAX** +66-2-275-5576

Contact Person Mr. watcharawit saengpongchawai (OAK)

E-mail info-jta@yiem.co.jp

Website <http://www.jta-trading.com/>

Agency JTA TRADING CO., LTD.

Major exporting countries and regions 10 Southeast Asian countries, China, Hong Kong, Taiwan, Korea, Russia, Kirigisu, Kazakhstan, South Africa, Cote d'Ivoire, USA, Brazil



Japanese Sake

In various regions all across
Japan, breweries perfect
their own types of sake.

Please choose the best one
you like from various tastes of Sake.



SHUGO (Ryuky Shugodensetsu)

SHUGO made from organic
premium turmeric produced
in Okinawa. A big hit in
Japan, making JPY2

billion/year. Already sold in many places in Thailand.



Sato Foods Industries Co.,Ltd.

Contact in Japan

Address 4-154 Horinouchi, Komaki-city,
Aichi, 4858523 Japan

TEL +81-568-77-7315

FAX +81-568-72-0273

Contact Person Mr. Akitoshi Noguchi

E-mail akitoshi.noguchi@sato-foods.co.jp

Website <http://www.sato-foods.co.jp/en/>

Certifications ISO9001:2008, ISO14001:2004,
FSSC22000:Version3

Major exporting countries and regions Thailand, China, Holland, USA



Vinegar powder F

Spray-dried powder made
from brewed vinegar
produced in Japan. How to
use: seasoning ingredient

such as sushi rice and dressing, powdered vinegar
drink ingredient and shelf life improving material.



Yuzu powder

Spray-dried powder made
from whole Yuzu fruits
produced in Japan.

How to use: confectionery
ingredient, drink and seasoning
ingredient.



Kagoshima Seicha Co.,Ltd

Contact in Japan

Address 3-11, Nanei, Kagoshima city,
Kagoshima, 891-0122, Japan

TEL +81-99-269-1221

FAX +81-99-269-2409

Contact Person Mr. Shota Kisanuki

E-mail kamimura@birouen.com

Website <http://kagoshimaseicha.co.jp>

Certifications FSSC22000, JAS

Contact in Thailand

Address 73 M1 T.Nongjom, A.Sansai,
Chiang Mai 50210 Thailand

TEL +66-53-491496 **FAX** +66-53-491389

Contact Person Ms. Jaruvan Shimazaki

E-mail jaruvan@accm.co.th

Website <http://kagoshimaseicha.co.jp/en/>

Agency Agri-Coordination Chiang Mai Co.,Ltd.

Major exporting countries and regions USA, Thailand

Satsumarché individual package



Satsumarché is 3g or 2g individually packaged green tea and flavor tea tea bags. We offer seven kinds tea bags.



Organic Green Tea & Organic Green Tea Powder

Organic Green Tea Powder can be used with sweets and other ingredients.



Nanzan-en Tea Corporation

Contact in Japan

Address 20 Minamiyama, Fujii-cho,
Anjo-city, Aichi, 444-1198, Japan

TEL +81-566-99-0128

FAX +81-566-99-3199

Contact Person Mr. Shinsuke Tomita

E-mail shinsuke_tomita@nanzanen.jp

Website <http://nanzanen.jp>

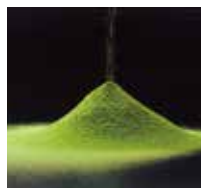
Certifications ISO22000

Major exporting countries and regions Thailand, Malaysia, Singapore, Philippines, Vietnam, Hong Kong, Taiwan, China, USA, EU countries, UAE, other

Ceremonial Nishio Matcha (Drinking use)



Made from handpicked first flush leaves grown in Nishio area. This has strong flavor, rich umami, brilliant green color and full of health benefits.



Ingredient Nishio Matcha (Food industry use)

Popular applications of Ingredient Matcha are ice creams, chocolates, baked sweets, breads, latte & so on. We offer various grades at your choice.

REPRESENTATIVE LIST of EXHIBITORS

Executive Committee for Promoting Sapporo Specialty Product and Tourism Fairs in Asia

Address kita 1, Nishi 2, Chuo-ku, Sapporo, Hokkaido, 060-8611 Japan

TEL +81-11-211-2392 **FAX** +81-11-218-5130 **Contact Person** Ms. Nozomi Ueda

E-mail global@city.sapporo.jp **Website** <https://www.city.sapporo.jp/city/english/index.html>

AKITA Prefecture

Address 1-1, Sanno 3-chome, Akita, 010-8572 Japan **TEL** +81-18-860-2218 **FAX** +81-18-860-3887

Contact Person Mr. Yoshiharu Ishida **E-mail** Ishida-Yoshiharu-127@pref.akita.lg.jp

Address Level 8, Zuellig House, 1Sirom Road, Bangarak, Bangkok 10500 Thailand

TEL +66-2-231-8382 **Contact Person** Mr. Kenji Tanaka **E-mail** kenji.tanaka0814@gmail.com

Agency Southeast Asia Liaison Office Akita, JAPAN

Yamagata International Economic Development Support Organization

Address Fujikasai Yamagata Bldg., 5F 3-5-20, Nanokamachi, Yamagata-city, Yamagata, 990-0042 Japan

TEL +81-23-687-1127 **FAX** +81-23-687-1129 **Contact Person** Mr. Yu Kikuchi

E-mail kikuchi@y-es.or.jp **Website** <http://www.yamagata-export.jp/>

Major exporting countries and regions China, Korea, Taiwan, Hong Kong, Singapore, Thailand, Malaysia, Philippines

KOMATSU SUISAN CO.,LTD

Address 1045-2 Tome-cho, Hitachi-shi, Ibaraki, 319-1231 Japan **TEL** +81-294-52-5501 **FAX** +81-294-52-5509

Contact Person Mr. Komatsu Nobukatsu **E-mail** ishibashi@shirasu.com **Website** <http://www.shirasu.com>

Address 32/35 Sino-thai Tower 4FL, Zone C, Unit A Sukhumvit21Rd., (Asoke)Klongtoey-nua, Wattana, Bangkok 10110 Thailand

TEL +66-2-661-6076-7 **FAX** +81-2-661-6078 **Contact Person** Mr. Suzuki Kenta **Certifications** ISO22000

E-mail kenta@komatsugroup.com **Website** <http://www.shirasu.com> **Agency** KOMATSU SUISAN CO.,LTD

Major exporting countries and regions Thailand, Dubai, the United States, Vietnam

Tochigi Prefectural Government

Address 1-1-20 Hanawada, Utsunomiya-shi, Tochigi, 328-8501 Japan

TEL +81-28-623-2195 **FAX** +81-28-623-2199 **Contact Person** Mr.Takahiro Kezuka

E-mail kokusai@pref.tochigi.lg.jp **Website** <http://www.pref.tochigi.lg.jp/index.html>

CHIBA FOODSTUFF EXPORT ASSOCIATION

Address 23F Marive East WBG, 2-6-1 Nakase, Mihama-ku, Chiba-shi, Chiba, 261-7123 Japan

TEL +81-43-271-4100 **FAX** +81-43-271-4480 **Contact Person** Mr. Yosuke Takahashi

E-mail CHB@jetro.go.jp **Website** <http://www.chibafoods-export.jp/>

ALL JAPAN TRADE ASSOCIATION OF CONFECTIONERY MANUFACTURERS

Address -

TEL +81-3-3439-7048 **FAX** +81-3-3439-8503 **Contact Person** Mr. Tetsushi Ando

E-mail andou@eiwamm.com **Website** http://www.tacom.or.jp/greeting_j.htm

MIE PREFECTURAL GOVERNMENT

Address 13 Komei-cho, Tsu-city, Mie, 514-8570 Japan

TEL +81-59-224-2458 **FAX** +81-59-224-2078 **Contact Person** Mr. Takayoshi Horikiri

E-mail export@pref.mie.jp **Website** <http://www.pref.mie.lg.jp/>

Major exporting countries and regions Thailand, Taiwan, USA, Singapore,

SHIGA PREFECTURAL GOVERNMENT

Address 4-1-1 kyomachi, Otsu, Shiga, 520-8577 Japan

TEL +81-77-528-3892 **FAX** +81-77-528-4881 **Contact Person** Ms. Minoru Sugimoto

E-mail gc01@pref.shiga.lg.jp **Website** <http://shigaquoo.jp/>

KOCHI PREFECTURAL TRADE ASSOCIATION

Address 1-2-20 Marunouchi, Kochi-city, Kochi, 780-8570 Japan

TEL +81-88-821-0033 **FAX** +81-88-822-3065 **Contact Person** Mr. Seishi Yamamoto

E-mail kochi-trade@kpta.or.jp **Website** <http://www.kpta.or.jp>