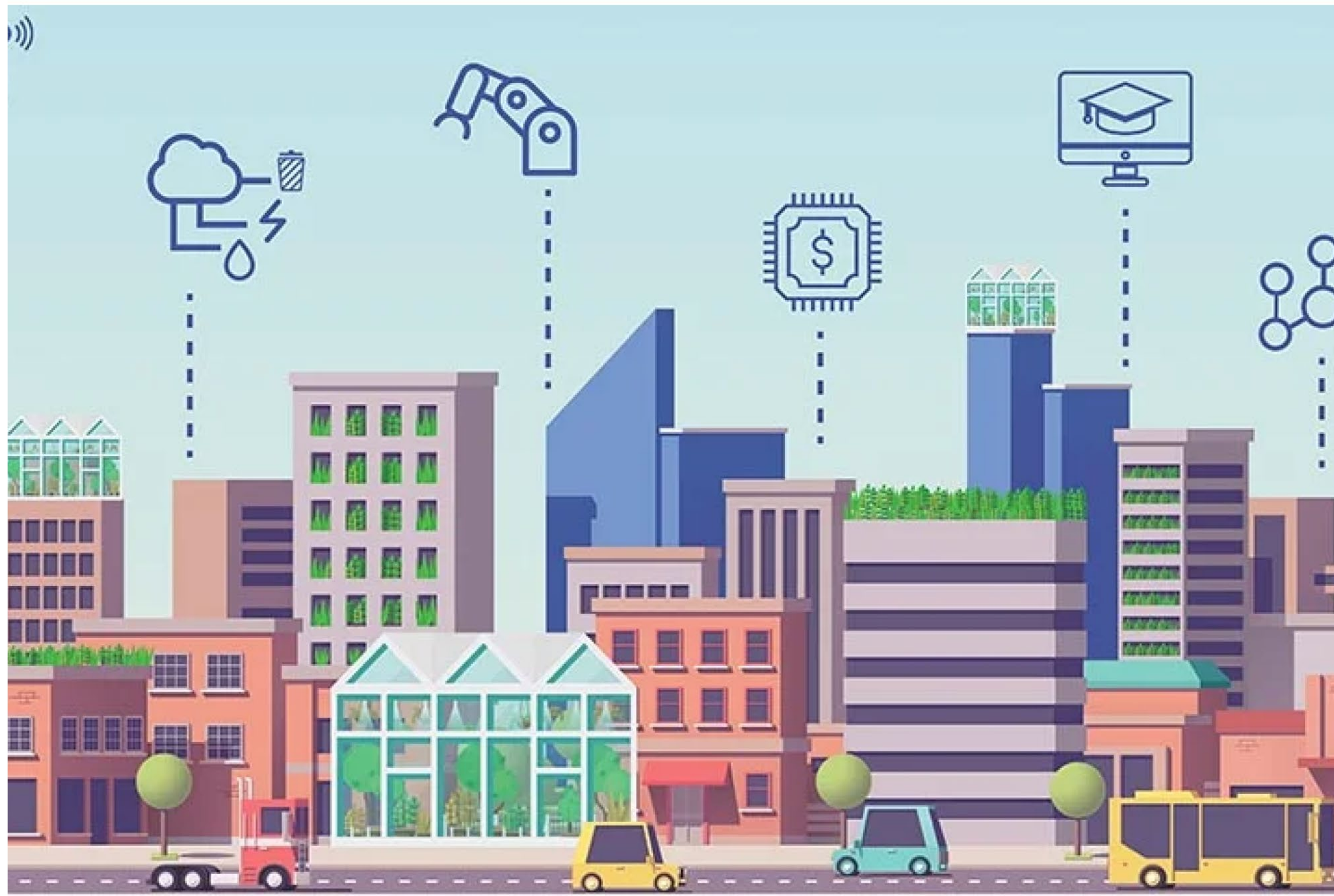


# Orchestrating Collective Intelligence



TieSet offers Adaptive-LLM (Large Language Model) System and STADLE (Scalable Traceable Adaptive Distributed Learning) Platform, cutting-edge technologies that are revolutionizing the landscape of natural language processing (NLP) and artificial intelligence (AI). These innovative solutions are designed to empower businesses across various industries by addressing crucial challenges related to data privacy, customization, efficiency, and intelligence-centric AI systems.



# AI Robotic solution for automatic palletizing in manufacturing

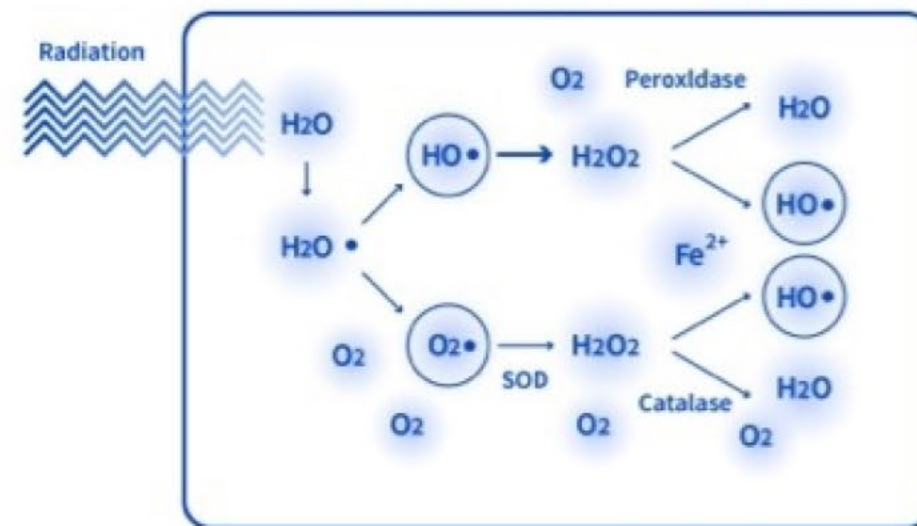


Closer Robotics, an AI Robotic solution for high-mix, low-volume manufacturers to help automate your picking, packing, and palletizing processes. Our solution is unique as it is compact, easy to use, and very software-adaptable. We have sold multiple solutions, including to Japan's largest food & beverage manufacturer. Each unit costs \$100k, and one can expect up to 75% in cost savings. As we are looking to market entry into the US, we are offering a two-month free trial.



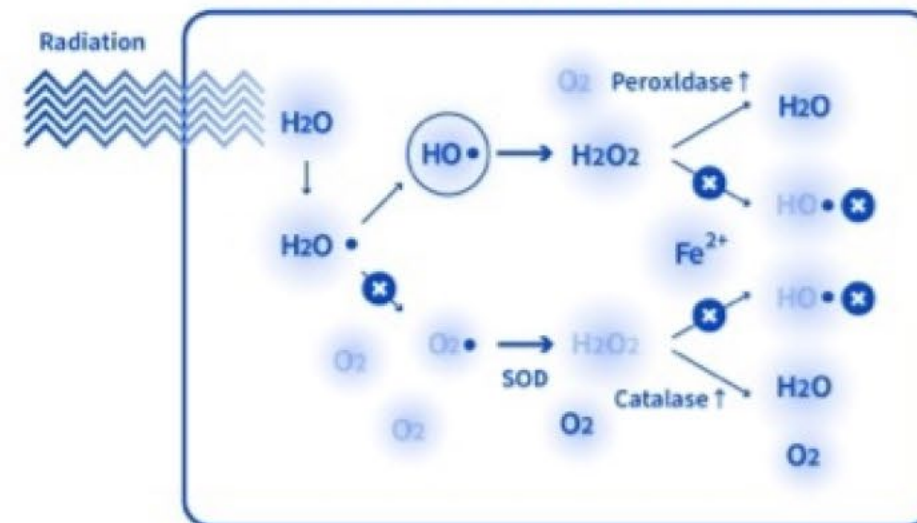
# KORTUC Turbocharges Radiotherapy: We Can Save 1.5M Lives Annually

## ☑️ Radiosensitive tumor cells



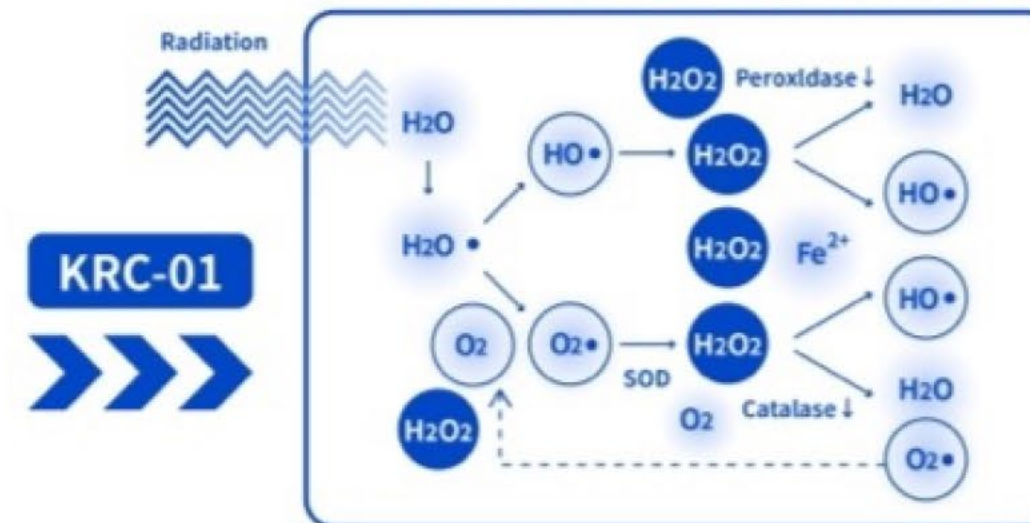
Radiation energy creates freeradicals which damages tumor cells.

## ☑️ Radioresistant tumor cells



Hypoxia (lack of O<sub>2</sub>) prevents increase in free radicals, making tumor cells radioresistant.

## ☑️ KRC-01 treated tumor cells

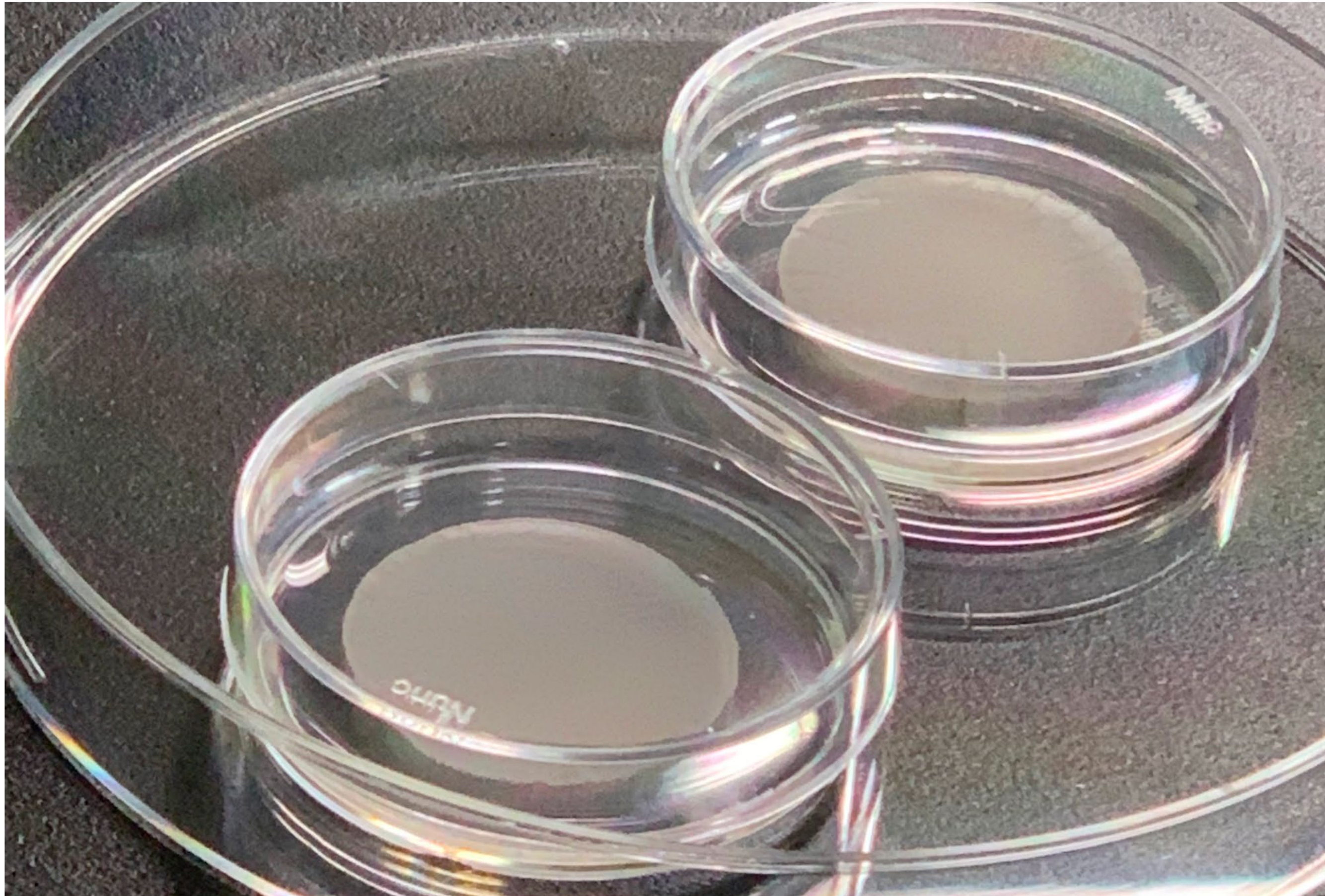


KRC-01 increases H<sub>2</sub>O<sub>2</sub>, increases O<sub>2</sub> production and inactivate peroxidase, making tumor cells back to radiosensitive. radicals which damages tumor cells.

Our company is developing a radiosensitizer to address a fundamental issue in cancer treatment by removing hypoxia in tumors. Hydrogen peroxide and sodium hyaluronate are used to boost the anti-tumor effects of radiation against cancer cells. We are currently conducting a Phase 2 study for breast cancer in the UK and India, and will expand to treat other cancers in the US and EU before targeting 1.5 million global patients annually.



# Front-runner in iPSC derived cardiomyocyte product for heart failure



Our main business is the commercialization of iPSC derived cardiomyocyte patch product for severe heart failure patients. Our main target patients are someone who has tried all medication available in the current market place but with little efficacy and someone if left untreated will eventually need LVADs or heart transplantation.



# HOMMA delivers large-scale, turnkey modern smart home experience



HOMMA believes the "true" smart home should be made for everyone: it is not just for technology-savvy residents and developers, and it should not require any technical knowledge to enjoy the benefits of a smart home. HOMMA is a combination of real estate developer and smart home software company and offers a developer-oriented approach to introduce a turn-key smart home without interrupting any ongoing development.



H O M M A

